

**bs-41202R****[ Primary Antibody ]****Ly-6G Rabbit pAb****BioSS**  
ANTIBODIES

www.bioss.com.cn

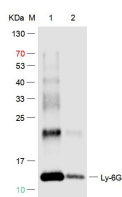
sales@bioss.com.cn

techsupport@bioss.com.cn

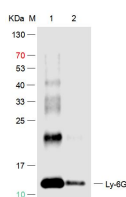
400-901-9800

**— DATASHEET —**

<b>Host:</b> Rabbit	<b>Isotype:</b> IgG	<b>Applications:</b> WB (1:500-2000)
<b>Clonality:</b> Polyclonal		<b>Reactivity:</b> Mouse
<b>GeneID:</b> 546644	<b>SWISS:</b> P35461	
<b>Target:</b> Ly-6G		
<b>Purification:</b> affinity purified by Protein A		<b>Predicted MW.:</b> 14 kDa
<b>Concentration:</b> 1mg/ml		<b>Subcellular Location:</b> Cell membrane
<b>Storage:</b> 0.01M TBS (pH7.4) with 1% BSA, 0.02% Proclin300 and 50% Glycerol. Shipped at 4°C. Store at -20°C for one year. Avoid repeated freeze/thaw cycles.		
<b>Background:</b> Ly6G is a GPI-anchored protein, that is also known as the myeloid differentiation antigen Gr1. The antigen is transiently expressed on monocytes in the bone marrow. The level of antigen expression in the bone marrow directly correlates with granulocyte differentiation and maturation. Ly6G is expressed predominantly on neutrophils, also in a subset of eosinophils, differentiating pre-monocytes, and plasmacytoid dendritic cells.		

**— VALIDATION IMAGES —**

Sample: Lane 1:Recombinant Mouse Ly-6G Protein at 500ng Lane 2:Recombinant Mouse Ly-6G Protein at 50ng Primary: Rabbit Anti-Ly-6G Polyclonal Antibody at 1/1000 dilution (Cat.bs-41202R) Secondary: IRDye800CW Goat Anti-Rabbit IgG at 1/20000 dilution Predicted band size: 14kD Observed band size: 13kD



Sample: Lane 1:Recombinant Mouse Ly-6G Protein at 500ng Lane 2:Recombinant Mouse Ly-6G Protein at 50ng Primary: Rabbit Anti-Ly-6G Polyclonal Antibody at 1/1000 dilution (Cat.bs-41202R) Secondary: IRDye800CW Goat Anti-Rabbit IgG at 1/20000 dilution Predicted band size: 14kD Observed band size: 13kD