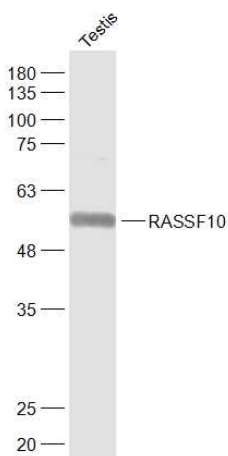


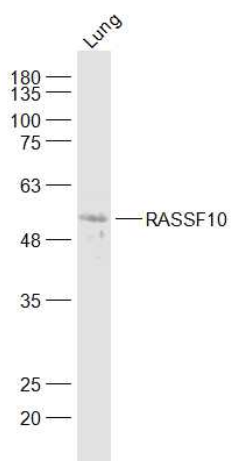
RASSF10 Rabbit pAb

Catalog Number: bs-21165R
Target Protein: RASSF10
Concentration: 1mg/ml
Form: Liquid
Host: Rabbit
Clonality: Polyclonal
Isotype: IgG
Applications: WB (1:500-2000)
Reactivity: Mouse (predicted:Human, Rat, Rabbit, Pig, Cow, Chicken, Dog)
Predicted MW: 57 kDa
Entrez Gene: 644943
Swiss Prot: A6NK89
Source: KLH conjugated synthetic peptide derived from human RASSF10: 51-150/507.
Purification: affinity purified by Protein A
Storage: Preservative: 0.02% Proclin300, Constituents: 1% BSA, 0.01M PBS, pH7.4.
Shipped at 4°C. Store at -20°C for one year. Avoid repeated freeze/thaw cycles.
Background: RASSF10 (Ras Association Domain Family Member 10) is a Protein Coding gene. An important paralog of this gene is RASSF9.

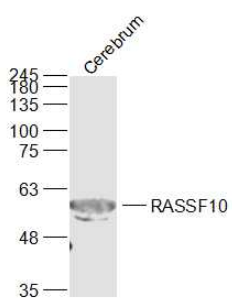
VALIDATION IMAGES



Sample: Testis (Mouse) Lysate at 40 ug Primary: Anti-RASSF10 (bs-21165R) at 1/1000 dilution Secondary: IRDye800CW Goat Anti-Rabbit IgG at 1/20000 dilution Predicted band size: 57 kD Observed band size: 57 kD



Sample: Lung (Mouse) Lysate at 40 ug Primary: Anti-RASSF10 (bs-21165R) at 1/1000 dilution Secondary: IRDye800CW Goat Anti-Rabbit IgG at 1/20000 dilution Predicted band size: 57 kD Observed band size: 57 kD



Sample: Cerebrum (Mouse) Lysate at 40 ug Primary: Anti-RASSF10 (bs-21165R) at 1/1000 dilution Secondary: IRDye800CW Goat Anti-Rabbit IgG at 1/20000 dilution Predicted band size: 57 kD Observed band size: 57 kD