

bs-21163R

[Primary Antibody]

RASL10B Rabbit pAb

Bioss
ANTIBODIES

www.bioss.com.cn

sales@bioss.com.cn

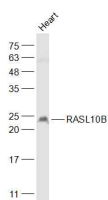
techsupport@bioss.com.cn

400-901-9800

— DATASHEET —

Host: Rabbit	Isotype: IgG	Applications: WB (1:500-2000)
Clonality: Polyclonal		Reactivity: Human, Mouse (predicted: Rat, Rabbit, Sheep, Cow, Chicken, Dog, Horse)
GeneID: 91608	SWISS: Q96S79	Predicted MW.: 23 kDa
Target: RASL10B		Subcellular Location: Cell membrane
Immunogen: KLH conjugated synthetic peptide derived from human RASL10B: 101-203/203.		
Purification: affinity purified by Protein A		
Concentration: 1mg/ml		
Storage: Preservative: 0.02% Proclin300, Constituents: 1% BSA, 0.01M PBS, pH7.4. Shipped at 4°C. Store at -20°C for one year. Avoid repeated freeze/thaw cycles.		
Background: Belongs to the small GTPase superfamily. Ras family.		

— VALIDATION IMAGES —



Sample: Heart (Mouse) Lysate at 40 ug Primary:
Anti-RASL10B (bs-21163R) at 1/1000 dilution
Secondary: IRDye800CW Goat Anti-Rabbit IgG at
1/20000 dilution Predicted band size: 23 kD
Observed band size: 23 kD