

bs-11124R**[Primary Antibody]****PCDHA11 Rabbit pAb****BioSS**
ANTIBODIES

www.bioss.com.cn

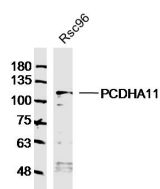
sales@bioss.com.cn

techsupport@bioss.com.cn

400-901-9800

— DATASHEET —

Host: Rabbit	Isotype: IgG	Applications: WB (1:500-2000)
Clonality: Polyclonal		Reactivity: Rat (predicted: Human, Mouse, Sheep, Cow, Dog, Horse)
GeneID: 56138	SWISS: Q9Y5I1	Predicted MW.: 100 kDa
Target: PCDHA11		Subcellular Location: Cell membrane
Immunogen: KLH conjugated synthetic peptide derived from human PCDHA11: 351-450/949. < Extracellular >		
Purification: affinity purified by Protein A		
Concentration: 1mg/ml		
Storage: 0.01M TBS (pH7.4) with 1% BSA, 0.02% Proclin300 and 50% Glycerol. Shipped at 4°C. Store at -20°C for one year. Avoid repeated freeze/thaw cycles.		
Background: Protocadherins are a large family of cadherin-like cell adhesion proteins that are involved in the establishment and maintenance of neuronal connections in the brain. There are three protocadherin (PCDH) gene clusters, designated alpha, beta and gamma, all of which contain multiple tandemly arranged genes. The protein products of PCDH-alpha genes interact with Integrin β 1 to promote cell adhesion and form oligomers with PCDH-gamma proteins at specific membrane sites. PCDHA11 is a 949 amino acid single-pass transmembrane protein that contains six cadherin domains and functions as a potential calcium-dependent cell-adhesion protein, possibly playing a role in the creation and maintenance of neuronal connections. There are two isoforms of PCDHA11 that are produced as a result of alternative splicing events.		

— VALIDATION IMAGES —

Sample: Rsc96 Cell (Rat) Cell Lysate at 40 ug
Primary: Anti-PCDHA11(bs-11124R) at 1/300
dilution Secondary: IRDye800CW Goat Anti-
Rabbit IgG at 1/20000 dilution Predicted band
size: 100kD Observed band size: 110kD