

bs-21139R**[Primary Antibody]****BioSS**
ANTIBODIES

www.bioss.com.cn

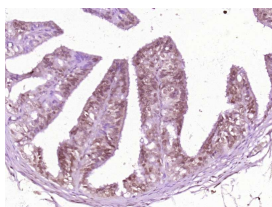
sales@bioss.com.cn

techsupport@bioss.com.cn

400-901-9800

RAD21L1 Rabbit pAb**— DATASHEET —**

| | | |
|--|----------------------|--|
| Host: Rabbit | Isotype: IgG | Applications: IHC-P (1:100-500) IHC-F (1:100-500) IF (1:100-500) |
| Clonality: Polyclonal | | |
| GeneID: 642636 | SWISS: Q9H4I0 | |
| Target: RAD21L1 | | Reactivity: Rat (predicted: Human, Mouse, Horse) |
| Immunogen: KLH conjugated synthetic peptide derived from human RAD21L1: 101-200/556. | | |
| Purification: affinity purified by Protein A | | Predicted MW.: 63 kDa |
| Concentration: 1mg/ml | | Subcellular Location: Cytoplasm ,Nucleus |
| Storage: Preservative: 0.02% Proclin300, Constituents: 1% BSA, 0.01M PBS, pH7.4. Shipped at 4°C. Store at -20°C for one year. Avoid repeated freeze/thaw cycles. | | |
| Background: Function: Meiosis-specific component of some cohesin complex. Probably required during early meiosis for separation of sister chromatids and homologous chromosomes. Replaces RAD21 in premeiotic S phase (during early stages of prophase I), while RAD21 reappears in later stages of prophase I. May be involved in synapsis initiation and crossover recombination between homologous chromosomes. Subunit structure: Component of some meiotic cohesin complex composed of the SMC1 (SMC1A or SMC1B) and SMC3 heterodimer attached via their hinge domain, RAD21L which link them, and STAG3. Sequence similarities Belongs to the rad21 family. | | |

— VALIDATION IMAGES —

Paraformaldehyde-fixed, paraffin embedded (Rat ovary); Antigen retrieval by boiling in sodium citrate buffer (pH6.0) for 15min; Block endogenous peroxidase by 3% hydrogen peroxide for 20 minutes; Blocking buffer (normal goat serum) at 37°C for 30min; Antibody incubation with (RAD21L1) Polyclonal Antibody, Unconjugated (bs-21139R) at 1:400 overnight at 4°C, followed by operating according to SP Kit(Rabbit) (sp-0023) instructions and DAB staining.