

**bs-10733R****[ Primary Antibody ]****HABP2 27 kDa light chain Rabbit pAb****Bioss**  
**ANTIBODIES**

www.bioss.com.cn

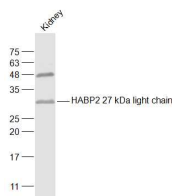
sales@bioss.com.cn

techsupport@bioss.com.cn

400-901-9800

**— DATASHEET —**

<b>Host:</b> Rabbit	<b>Isotype:</b> IgG	<b>Applications:</b> WB (1:500-2000)
<b>Clonality:</b> Polyclonal		<b>Reactivity:</b> Mouse (predicted: Human, Rat, Rabbit, Horse)
<b>GeneID:</b> 3026	<b>SWISS:</b> Q14520	
<b>Target:</b> HABP2 27 kDa light chain		<b>Predicted MW.:</b> 27 kDa
<b>Immunogen:</b> KLH conjugated synthetic peptide derived from human Hyaluronan-binding protein 2 27 kDa light chain: 271-370/560.		<b>Subcellular Location:</b> Secreted
<b>Purification:</b> affinity purified by Protein A		
<b>Concentration:</b> 1mg/ml		
<b>Storage:</b> 0.01M TBS (pH7.4) with 1% BSA, 0.02% Proclin300 and 50% Glycerol. Shipped at 4°C. Store at -20°C for one year. Avoid repeated freeze/thaw cycles.		
<b>Background:</b> The protein encoded by this gene is an extracellular serine protease that binds hyaluronic acid and is involved in cell adhesion. The encoded protein is synthesized as a single chain, but then undergoes an autoproteolytic event to form the functional heterodimer. Further autoproteolysis leads to smaller, inactive peptides. This protease is known to cleave urinary plasminogen activator, coagulation factor VII, and the alpha and beta chains of fibrinogen, but not prothrombin, plasminogen, or the gamma chain of fibrinogen. Two transcript variants encoding different isoforms have been found for this gene. [provided by RefSeq, Apr 2010]		

**— VALIDATION IMAGES —**

Sample: Kidney (Mouse) Lysate at 40 ug Primary:  
Anti-HABP2 27 kDa light chain (bs-10733R) at  
1/1000 dilution Secondary: IRDye800CW Goat  
Anti-Rabbit IgG at 1/20000 dilution Predicted  
band size: 27 kD Observed band size: 30 kD