

bs-18719R

[Primary Antibody]

MCCC2 Rabbit pAb

Bioss
ANTIBODIES

www.bioss.com.cn

sales@bioss.com.cn

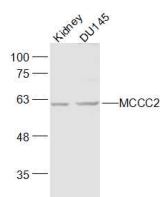
techsupport@bioss.com.cn

400-901-9800

— DATASHEET —

Host: Rabbit	Isotype: IgG	Applications: WB (1:500-2000)
Clonality: Polyclonal		
GeneID: 64087	SWISS: Q9HCC0	
Target: MCCC2		
Immunogen: KLH conjugated synthetic peptide derived from human MCCC2: 351-450/563.		
Purification: affinity purified by Protein A		
Concentration: 1mg/ml		
Storage: 0.01M TBS (pH7.4) with 1% BSA, 0.02% Proclin300 and 50% Glycerol. Shipped at 4°C. Store at -20°C for one year. Avoid repeated freeze/thaw cycles.		Reactivity: Human, Mouse (predicted: Rat, Rabbit, Pig, Cow, Dog, Horse, Xenopus tropicalis)
Background: This gene encodes the small subunit of 3-methylcrotonyl-CoA carboxylase. This enzyme functions as a heterodimer and catalyzes the carboxylation of 3-methylcrotonyl-CoA to form 3-methylglutaconyl-CoA. Mutations in this gene are associated with 3-Methylcrotonylglycinuria, an autosomal recessive disorder of leucine catabolism. [provided by RefSeq, Jul 2008]		Predicted MW.: 61 kDa
		Subcellular Location: Cytoplasm

— VALIDATION IMAGES —



Sample: Kidney (Mouse) Lysate at 40 ug
DU145(Human) Cell Lysate at 30 ug
Primary: Anti-MCCC2 (bs-18719R) at 1/1000 dilution
Secondary: IRDye800CW Goat Anti-Rabbit IgG at 1/20000 dilution
Predicted band size: 61 kD
Observed band size: 61 kD