

SLC35E1 Rabbit pAb

Catalog Number: bs-21262R

Target Protein: SLC35E1

Concentration: 1mg/ml

Form: Liquid

Host: Rabbit

Clonality: Polyclonal

Isotype: IgG

Applications: WB (1:500-2000)

Reactivity: Mouse (predicted:Human, Rat, Pig, Sheep, Cow, Dog, Horse)

Predicted MW: 45 kDa

Entrez Gene: 79939

Swiss Prot: Q96K37

Source: KLH conjugated synthetic peptide derived from human SLC35E1: 281-380/410.

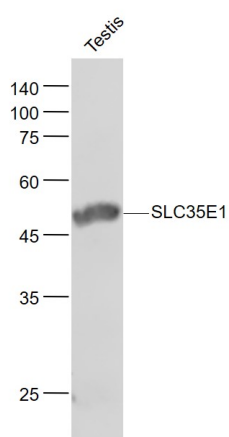
Purification: affinity purified by Protein A

Storage: Preservative: 0.02% Proclin300, Constituents: 1% BSA, 0.01M PBS, pH7.4.

Shipped at 4°C. Store at -20°C for one year. Avoid repeated freeze/thaw cycles.

Background: SLC35E1 (Solute Carrier Family 35 Member E1) is a Protein Coding gene. An important paralog of this gene is SLC35E2B.

VALIDATION IMAGES



Sample: Testis (Mouse) Lysate at 40 ug Primary: Anti- SLC35E1 (bs-21262R) at 1/1000 dilution Secondary: IRDye800CW Goat Anti-Rabbit IgG at 1/20000 dilution Predicted band size: 45 kD Observed band size: 50 kD