

bs-5611R**[Primary Antibody]****phospho-Tuberin (Ser664) Rabbit pAb****Bioss**
ANTIBODIES

www.bioss.com.cn

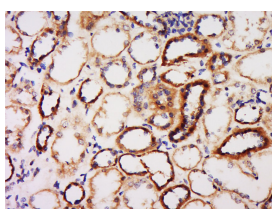
sales@bioss.com.cn

techsupport@bioss.com.cn

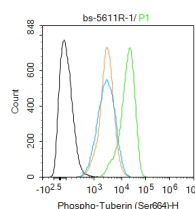
400-901-9800

— DATASHEET —

Host: Rabbit	Isotype: IgG	Applications: IHC-P (1:100-500)
Clonality: Polyclonal		IHC-F (1:100-500)
GeneID: 7249	SWISS: P49815	IF (1:100-500)
Target: Tuberin (Ser664)		Flow-Cyt (1ug/Test)
Immunogen: KLH conjugated Synthesised phosphopeptide derived from human Tuberin around the phosphorylation site of Ser664: PL(p-S)PP.		Reactivity: Human, Mouse (predicted: Rat, Pig, Dog, Horse)
Purification: affinity purified by Protein A		Predicted MW.: 200 kDa
Concentration: 1mg/ml		Subcellular Location: Cell membrane ,Cytoplasm
Storage: 0.01M TBS (pH7.4) with 1% BSA, 0.02% Proclin300 and 50% Glycerol. Shipped at 4°C. Store at -20°C for one year. Avoid repeated freeze/thaw cycles.		
Background: Mutations in this gene lead to tuberous sclerosis complex. Its gene product is believed to be a tumor suppressor and is able to stimulate specific GTPases. The protein associates with hamartin in a cytosolic complex, possibly acting as a chaperone for hamartin. Alternative splicing results in multiple transcript variants encoding different isoforms. [provided by RefSeq].		

— VALIDATION IMAGES —

Tissue/cell: human kidney tissue; 4% Paraformaldehyde-fixed and paraffin-embedded; Antigen retrieval: citrate buffer (0.01M, pH 6.0), Boiling bathing for 15min; Block endogenous peroxidase by 3% Hydrogen peroxide for 30min; Blocking buffer (normal goat serum, C-0005) at 37°C for 20 min; Incubation: Anti-TSC2 Polyclonal Antibody, Unconjugated(bs-5611R) 1:500, overnight at 4°C, followed by conjugation to the secondary antibody(SP-0023) and DAB(C-0010) staining



Blank control (black line) :NIH/3T3. Primary Antibody (green line): Rabbit Anti-Phospho-Tuberin (Ser664) antibody (bs-5611R) Dilution:1ug/Test; Secondary Antibody (white blue line) : Goat anti-rabbit IgG-AF488 Dilution: 0.5ug/Test. Isotype control (orange line) : Normal Rabbit IgG Protocol The cells were fixed with 4% PFA (10min at room temperature)and then permeabilized with 90% ice-cold methanol for 20 min at -20°C, The cells were then incubated in 5%BSA to block non-specific protein-protein interactions for 30 min at room temperature .Cells stained with Primary Antibody for 30 min at room temperature. The secondary antibody used for 40 min at room temperature. Acquisition of 20,000 events was performed.