

bs-0429R**[Primary Antibody]****WNK4 Rabbit pAb****Bioss**
ANTIBODIES

www.bioss.com.cn

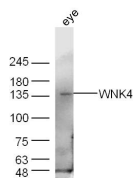
sales@bioss.com.cn

techsupport@bioss.com.cn

400-901-9800

— DATASHEET —

Host: Rabbit	Isotype: IgG	Applications: WB (1:500-2000)
Clonality: Polyclonal		Reactivity: Mouse (predicted: Human, Rat)
GeneID: 65266	SWISS: Q96J92	
Target: WNK4		Predicted MW.: 135 kDa
Immunogen: KLH conjugated synthetic peptide derived from human WNK4: 351-450/1243.		Subcellular Location: Cytoplasm
Purification: affinity purified by Protein A		
Concentration: 1mg/ml		
Storage: 0.01M TBS (pH7.4) with 1% BSA, 0.02% Proclin300 and 50% Glycerol. Shipped at 4°C. Store at -20°C for one year. Avoid repeated freeze/thaw cycles.		
Background: Regulates the activity of the thiazide-sensitive Na-Cl cotransporter, SLC12A3, by phosphorylation which appears to prevent membrane trafficking of SLC12A3. Also inhibits the renal K(+)channel, KCNJ1, via a kinase-independent mechanism by which it induces clearance of the protein from the cell surface by clathrin-dependent endocytosis. WNK4 appears to act as a molecular switch that can vary the balance between NaCl reabsorption and K(+)secretion to maintain integrated homeostasis.		

— VALIDATION IMAGES —

Sample: Eye(Mouse) Lysate at 30 ug Primary:

Anti- WNK4 (bs-0429R) at 1/300 dilution

Secondary: IRDye800CW Goat Anti-Rabbit IgG at

1/20000 dilution Predicted band size: 135 kD

Observed band size: 135 kD