

bsm-30049M**[Primary Antibody]****human CD62L Mouse mAb****BioSS**
ANTIBODIES

www.bioss.com.cn

sales@bioss.com.cn

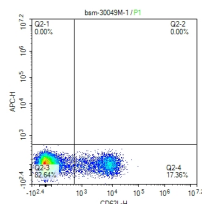
techsupport@bioss.com.cn

400-901-9800

— DATASHEET —**Host:** Mouse**Isotype:** Mouse IgG1, k**Clonality:** Monoclonal**CloneNo.:** 2E8**GeneID:** 6402**SWISS:** P14151**Target:** human CD62L**Purification:** affinity purified by Protein G**Concentration:** 1mg/ml**Storage:** 0.01M TBS (pH7.4).

Shipped at 4°C. Store at -20°C for one year. Avoid repeated freeze/thaw cycles.

Background: This gene encodes a cell surface adhesion molecule that belongs to a family of adhesion/homing receptors. The encoded protein contains a C-type lectin-like domain, a calcium-binding epidermal growth factor-like domain, and two short complement-like repeats. The gene product is required for binding and subsequent rolling of leucocytes on endothelial cells, facilitating their migration into secondary lymphoid organs and inflammation sites. Single-nucleotide polymorphisms in this gene have been associated with various diseases including immunoglobulin A nephropathy. Alternatively spliced transcript variants have been found for this gene. [provided by RefSeq, Oct 2009].

Applications: Flow-Cyt (2ug/Test)**Reactivity:** Human**Predicted
MW.:** 88 kDa**Subcellular
Location:** Cell membrane**— VALIDATION IMAGES —**

scatter diagram showing peripheral blood lymphocytes stained with CD62L. The cells were incubated with the antibody (bsm-30049M) for 30 min at 22°C. The secondary antibody used for 40 min at room temperature. Acquisition of >10,000 events was performed.