

bs-4170R**[Primary Antibody]****BioSS**
ANTIBODIES

www.bioss.com.cn

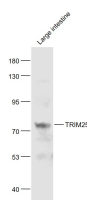
sales@bioss.com.cn

techsupport@bioss.com.cn

400-901-9800

TRIM25 Rabbit pAb**— DATASHEET —**

Host: Rabbit	Isotype: IgG	Applications: WB (1:500-2000)
Clonality: Polyclonal		Reactivity: Mouse (predicted: Human, Rat, Sheep, Cow, Dog)
GeneID: 7706	SWISS: Q14258	
Target: TRIM25		Predicted MW.: 71 kDa
Immunogen: KLH conjugated synthetic peptide derived from human TRIM25: 531-630/630.		Subcellular Location: Cytoplasm ,Nucleus
Purification: affinity purified by Protein A		
Concentration: 1mg/ml		
Storage: 0.01M TBS (pH7.4) with 1% BSA, 0.02% Proclin300 and 50% Glycerol. Shipped at 4°C. Store at -20°C for one year. Avoid repeated freeze/thaw cycles.		
Background: The protein encoded by this gene is a member of the tripartite motif (TRIM) family. The TRIM motif includes three zinc binding domains, a RING, a B box type 1 and a B box type 2, and a coiled coil region. The protein localizes to the cytoplasm. The presence of potential DNA binding and dimerization transactivation domains suggests that this protein may act as a transcription factor, similar to several other members of the TRIM family. Expression of the gene is upregulated in response to estrogen, and it is thought to mediate estrogen actions in breast cancer as a primary response gene.		

— VALIDATION IMAGES —

Sample: Large intestine (Mouse) Lysate at 40 ug
Primary: Anti- TRIM25 (bs-4170R) at 1/1000
dilution Secondary: IRDye800CW Goat Anti-
Rabbit IgG at 1/20000 dilution Predicted band
size: 71 kD Observed band size: 73 kD