

**bs-17352R****[ Primary Antibody ]****Homer (1b+1c) Rabbit pAb****BioSS**  
**ANTIBODIES**

www.bioss.com.cn

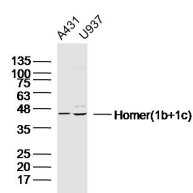
sales@bioss.com.cn

techsupport@bioss.com.cn

400-901-9800

**— DATASHEET —**

<b>Host:</b> Rabbit	<b>Isotype:</b> IgG	<b>Applications:</b> WB (1:500-2000)
<b>Clonality:</b> Polyclonal		<b>Reactivity:</b> Human, Rat (predicted: Mouse, Sheep, Cow, Horse)
<b>GeneID:</b> 9456	<b>SWISS:</b> Q86YM7	
<b>Target:</b> Homer (1b+1c)		<b>Predicted MW.:</b> 45 kDa
<b>Immunogen:</b> KLH conjugated synthetic peptide derived from human Homer (1b+1c): 1-100/354.		<b>Subcellular Location:</b> Cytoplasm
<b>Purification:</b> affinity purified by Protein A		
<b>Concentration:</b> 1mg/ml		
<b>Storage:</b> 0.01M TBS (pH7.4) with 1% BSA, 0.02% Proclin300 and 50% Glycerol. Shipped at 4°C. Store at -20°C for one year. Avoid repeated freeze/thaw cycles.		
<b>Background:</b> This gene encodes a member of the homer family of dendritic proteins. Members of this family regulate group 1 metabotropic glutamate receptor function. [provided by RefSeq, Jul 2008]		

**— VALIDATION IMAGES —**

Sample: A431 Cell (Human) Lysate at 30 ug U937  
Cell(Human)Lysate at 30 ug Primary: Anti-  
Homer(1b+1c) (bs-17352R) at 1/300 dilution  
Secondary: IRDye800CW Goat Anti-Rabbit IgG at  
1/20000 dilution Predicted band size: 45kD  
Observed band size: 45kD