

bs-17348R**[Primary Antibody]****HOGA1 Rabbit pAb****BioSS**
ANTIBODIES

www.bioss.com.cn

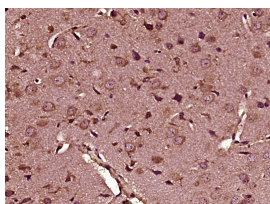
sales@bioss.com.cn

techsupport@bioss.com.cn

400-901-9800

— DATASHEET —

Host: Rabbit Clonality: Polyclonal GeneID: 112817 Target: HOGA1 Immunogen: KLH conjugated synthetic peptide derived from human HOGA1: 26-130/327. Purification: affinity purified by Protein A Concentration: 1mg/ml Storage: 0.01M TBS (pH7.4) with 1% BSA, 0.02% Proclin300 and 50% Glycerol. Shipped at 4°C. Store at -20°C for one year. Avoid repeated freeze/thaw cycles. Background: DHGPSL is a 327 amino acid mitochondrial protein that catalyzes the last step in the hydroxyproline metabolic pathway. Existing as two alternatively spliced isoforms, DHGPSL is expressed in kidney and liver and is inhibited by divalent cations. Defects in the gene that encode DHGPSL are the cause of primary hyperoxalurea type III (HP3), a disorder of calcium oxalate nephrolithiasis. Patients with HP3 excrete urine with elevated levels of oxalate and L-glycerate. The DHGPSL gene maps to human chromosome 10, which contains over 800 genes and 135 million nucleotides. Defects in some of the genes that map to chromosome 10 are associated with Charcot-Marie Tooth disease, Jackson-Weiss syndrome, Usher syndrome, nonsyndromic deafness, Wolman's syndrome, Cowden syndrome, multiple endocrine neoplasia type 2 and porphyria	Isotype: IgG SWISS: Q86XE5 Applications: IHC-P (1:100-500) IHC-F (1:100-500) IF (1:100-500) Reactivity: Mouse (predicted: Human) Predicted MW.: 32 kDa Subcellular Location: Cytoplasm
---	--

— VALIDATION IMAGES —

Paraformaldehyde-fixed, paraffin embedded (Mouse brain); Antigen retrieval by boiling in sodium citrate buffer (pH6.0) for 15min; Block endogenous peroxidase by 3% hydrogen peroxide for 20 minutes; Blocking buffer (normal goat serum) at 37°C for 30min; Antibody incubation with (HOGA1) Polyclonal Antibody, Unconjugated (bs-17348R) at 1:400 overnight at 4°C, followed by operating according to SP Kit(Rabbit) (sp-0023) instructions and DAB staining.