

bs-4043R**[Primary Antibody]****UGP2 Rabbit pAb****Bioss**
ANTIBODIES

www.bioss.com.cn

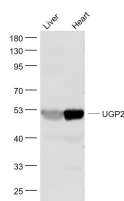
sales@bioss.com.cn

techsupport@bioss.com.cn

400-901-9800

— DATASHEET —

Host: Rabbit	Isotype: IgG	Applications: WB (1:500-2000)
Clonality: Polyclonal		Reactivity: Mouse (predicted: Human, Rat, Rabbit, Pig, Cow, Chicken, Dog, Horse)
GeneID: 7360	SWISS: Q16851	
Target: UGP2		Predicted MW.: 56 kDa
Immunogen: KLH conjugated synthetic peptide derived from human UGP2: 401-508/508.		Subcellular Location: Cytoplasm
Purification: affinity purified by Protein A		
Concentration: 1mg/ml		
Storage: 0.01M TBS (pH7.4) with 1% BSA, 0.02% Proclin300 and 50% Glycerol. Shipped at 4°C. Store at -20°C for one year. Avoid repeated freeze/thaw cycles.		
Background: UGP2 (UDP glucose pyrophosphorylase 2) is an important intermediary in cellular metabolic pathways. It transfers a glucose moiety from glucose-1-phosphate to MgUTP and forms UDP glucose and MgPPi.		

— VALIDATION IMAGES —

Sample: Liver (Mouse) Lysate at 40 ug Heart (Mouse) Lysate at 40 ug
Primary: Anti- UGP2 (bs-4043R) at 1/1000 dilution
Secondary: IRDye800CW Goat Anti-Rabbit IgG at 1/20000 dilution
Predicted band size: 56 kD Observed band size: 52 kD