

bs-12107R**[Primary Antibody]****P2RX1 Rabbit pAb****BioSS**
ANTIBODIES

www.bioss.com.cn

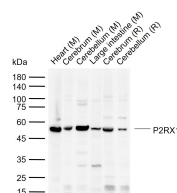
sales@bioss.com.cn

techsupport@bioss.com.cn

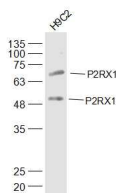
400-901-9800

— DATASHEET —

Host: Rabbit	Isotype: IgG	Applications: WB (1:500-2000)
Clonality: Polyclonal		Reactivity: Mouse, Rat (predicted: Human, Rabbit, Pig, Cow, Dog, Horse)
GeneID: 5023	SWISS: P51575	Predicted MW.: 45 kDa
Target: P2RX1		Subcellular Location: Cell membrane
Immunogen: KLH conjugated synthetic peptide derived from human P2RX1: 51-150/399. < Extracellular >		
Purification: affinity purified by Protein A		
Concentration: 1mg/ml		
Storage: 0.01M TBS (pH7.4) with 1% BSA, 0.02% Proclin300 and 50% Glycerol. Shipped at 4°C. Store at -20°C for one year. Avoid repeated freeze/thaw cycles.		
Background: The P2X receptor family is comprised of ligand-gated ion channels that allow for the increased permeability of calcium into the cell in response to extracellular ATP. The seven P2X receptors, P2X1-P2X7, form either homomeric or heteromeric channels or both. They are characterized by intracellular amino- and carboxy-termini. P2X receptors are expressed in a wide variety of tissues, including neurons, prostate, bladder, pancreas, colon, testis and ovary. The major function of the P2X receptors is to mediate synaptic transmissions between neurons and to other tissues via the binding of extracellular ATP, which acts as a neurotransmitter. The P2X receptors may be involved in the onset of necrosis or apoptosis after prolonged exposure to high concentrations of extracellular ATP.		

— VALIDATION IMAGES —

Sample: Lane 1: Mouse Heart tissue lysates Lane 2: Mouse Cerebrum tissue lysates Lane 3: Mouse Cerebellum tissue lysates Lane 4: Mouse Large intestine tissue lysates Lane 5: Rat Cerebrum tissue lysates Lane 6: Rat Cerebellum tissue lysates Primary: Anti-P2RX1 (bs-12107R) at 1/1000 dilution Secondary: IRDye800CW Goat Anti-Rabbit IgG at 1/20000 dilution Predicted band size: 45 kDa Observed band size: 52 kDa



Sample: H9C2(Rat) Cell Lysate at 30 ug Primary: Anti-P2RX1 (bs-12107R) at 1/500 dilution Secondary: IRDye800CW Goat Anti-Rabbit IgG at 1/20000 dilution Predicted band size: 45 kD Observed band size: 50/65 kD