

bs-16389R

[Primary Antibody]

ZYG11BL Rabbit pAb

Bioss
ANTIBODIES

www.bioss.com.cn

sales@bioss.com.cn

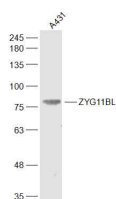
techsupport@bioss.com.cn

400-901-9800

— DATASHEET —

Host: Rabbit	Isotype: IgG	Applications: WB (1:500-2000)
Clonality: Polyclonal		Reactivity: Human (predicted: Mouse, Rat, Rabbit, Pig, Sheep, Cow, Dog, Horse)
GeneID: 10444	SWISS: Q7Z7L7	Predicted MW.: 88 kDa
Target: ZYG11BL		Subcellular Location: Cytoplasm
Immunogen: KLH conjugated synthetic peptide derived from human ZYG11BL: 21-120/766.		
Purification: affinity purified by Protein A		
Concentration: 1mg/ml		
Storage: 0.01M TBS (pH7.4) with 1% BSA, 0.02% Proclin300 and 50% Glycerol. Shipped at 4°C. Store at -20°C for one year. Avoid repeated freeze/thaw cycles.		
Background: This gene encodes a subunit of an E3 ubiquitin ligase complex that may be involved in meiosis. The encoded protein contains three leucine-rich repeat motifs. [provided by RefSeq, Nov 2012]		

— VALIDATION IMAGES —



Sample: A431(Human) Cell Lysate at 30 ug
Primary: Anti-ZYG11BL (bs-16389R) at 1/300
dilution Secondary: IRDye800CW Goat Anti-
Rabbit IgG at 1/20000 dilution Predicted band
size: 88 kD Observed band size: 88 kD