

**bs-16387R****[ Primary Antibody ]****ZZZ3 Rabbit pAb****Bioss**  
**ANTIBODIES**

www.bioss.com.cn

sales@bioss.com.cn

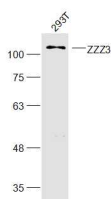
techsupport@bioss.com.cn

400-901-9800

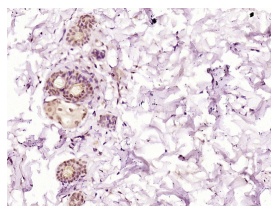
**— DATASHEET —****Host:** Rabbit**Isotype:** IgG**Clonality:** Polyclonal**GeneID:** 26009**SWISS:** Q8IYH5**Target:** ZZZ3**Immunogen:** KLH conjugated synthetic peptide derived from human ZZZ3: 4-100/903.**Purification:** affinity purified by Protein A**Concentration:** 1mg/ml**Storage:** 0.01M TBS (pH7.4) with 1% BSA, 0.02% Proclin300 and 50% Glycerol.

Shipped at 4°C. Store at -20°C for one year. Avoid repeated freeze/thaw cycles.

**Background:** ZZZ3 (ZZ-type zinc finger-containing protein 3) is a 903 amino acid protein that contains one HTH myb-type DNA-binding domain and one ZZ-type zinc finger. Phosphorylated upon DNA damage by ATM or ATR, ZZZ3 is a subunit of the ATAC complex, which is composed of GCN5, CRP2BP, ADA3, TADA2L, DR1, CCDC101, YEATS2, WDR5 and MBIP. The ATAC complex has histone acetyltransferase activity on histones H3 and H4. ZZZ3 is expressed as four isoforms produced by alternative splicing and is encoded by a gene mapping to human chromosome 1. Chromosome 1 is the largest human chromosome spanning about 260 million base pairs and making up 8% of the human genome. There are about 3,000 genes on chromosome 1, and considering the great number of genes there are also a large number of diseases associated with chromosome 1. Notably, the rare aging disease Hutchinson-Gilford progeria is associated with the LMNA gene which encodes lamin A. When defective, the LMNA gene product can build up in the nucleus and cause characteristic nuclear blebs. The mechanism of rapidly enhanced aging is unclear and is a topic of continuing exploration. Stickler syndrome, Parkinsons, Gaucher disease and Usher syndrome are also associated with chromosome 1.

**Applications:** **WB** (1:500-2000)**IHC-P** (1:100-500)**IHC-F** (1:100-500)**IF** (1:100-500)**Reactivity:** Human, Rat  
(predicted: Mouse, Pig,  
Sheep, Cow, Chicken, Dog)**Predicted  
MW.:** 102 kDa**Subcellular  
Location:** Nucleus**— VALIDATION IMAGES —**

Sample: 293T(Human) Cell Lysate at 30 ug  
 Primary: Anti-ZZZ3 (bs-16387R) at 1/300 dilution  
 Secondary: IRDye800CW Goat Anti-Rabbit IgG at  
 1/20000 dilution Predicted band size: 102 kD  
 Observed band size: 102 kD



Paraformaldehyde-fixed, paraffin embedded  
 (Human skin); Antigen retrieval by boiling in  
 sodium citrate buffer (pH6.0) for 15min; Block  
 endogenous peroxidase by 3% hydrogen  
 peroxide for 20 minutes; Blocking buffer (normal  
 goat serum) at 37°C for 30min; Antibody  
 incubation with (ZZZ3) Polyclonal Antibody,  
 Unconjugated (bs-16387R) at 1:500 overnight at  
 4°C, followed by a conjugated secondary  
 (sp-0023) for 20 minutes and DAB staining.