

**bs-19336R****[ Primary Antibody ]**

## Nucleoplasmin 3 Rabbit pAb

**BioSS**  
ANTIBODIES

www.bioss.com.cn

sales@bioss.com.cn

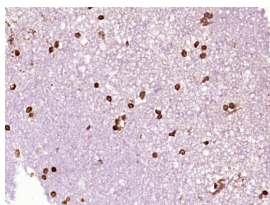
techsupport@bioss.com.cn

400-901-9800

### — DATASHEET —

<b>Host:</b> Rabbit	<b>Isotype:</b> IgG	<b>Applications:</b> IHC-P (1:100-500) IHC-F (1:100-500) IF (1:100-500)  <b>Reactivity:</b> Human (predicted: Mouse, Rat, Rabbit, Sheep, Cow, Dog, Horse)  <b>Predicted MW.:</b> 19 kDa  <b>Subcellular Location:</b> Nucleus
<b>Clonality:</b> Polyclonal		
<b>GeneID:</b> 10360	<b>SWISS:</b> O75607	
<b>Target:</b> Nucleoplasmin 3		
<b>Immunogen:</b> KLH conjugated synthetic peptide derived from human Nucleoplasmin 3: 2-100/178.		
<b>Purification:</b> affinity purified by Protein A		
<b>Concentration:</b> 1mg/ml		
<b>Storage:</b> 0.01M TBS (pH7.4) with 1% BSA, 0.02% Proclin300 and 50% Glycerol. Shipped at 4°C. Store at -20°C for one year. Avoid repeated freeze/thaw cycles.		
<b>Background:</b> The protein encoded by this gene is related to the nuclear chaperone phosphoproteins, nucleoplasmin and nucleophosmin. This protein is strongly expressed in diverse cell types where it localizes primarily to the nucleus. Based on its similarity to nucleoplasmin and nucleophosmin, this protein likely functions as a molecular chaperone in the cell nucleus. [provided by RefSeq, Oct 2008]		

### — VALIDATION IMAGES —



Paraformaldehyde-fixed, paraffin embedded (human brain glioma); Antigen retrieval by boiling in sodium citrate buffer (pH6.0) for 15min; Block endogenous peroxidase by 3% hydrogen peroxide for 20 minutes; Blocking buffer (normal goat serum) at 37°C for 30min; Antibody incubation with (Nucleoplasmin 3) Polyclonal Antibody, Unconjugated (bs-19336R) at 1:400 overnight at 4°C, followed by operating according to SP Kit(Rabbit) (sp-0023) instructions and DAB staining.