

**bs-20113R****[ Primary Antibody ]****RanBP3 Rabbit pAb****Bioss**  
**ANTIBODIES**

www.bioss.com.cn

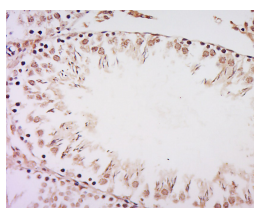
sales@bioss.com.cn

techsupport@bioss.com.cn

400-901-9800

**— DATASHEET —**

<b>Host:</b> Rabbit	<b>Isotype:</b> IgG	<b>Applications:</b> <b>IHC-P</b> (1:100-500) <b>IHC-F</b> (1:100-500) <b>IF</b> (1:100-500)
<b>Clonality:</b> Polyclonal		
<b>GeneID:</b> 8498	<b>SWISS:</b> Q9H6Z4	
<b>Target:</b> RanBP3		<b>Reactivity:</b> Rat (predicted: Human, Mouse, Pig, Chicken, Dog)
<b>Immunogen:</b> KLH conjugated synthetic peptide derived from human RanBP3: 441-540/567.		
<b>Purification:</b> affinity purified by Protein A		<b>Predicted MW.:</b> 60 kDa
<b>Concentration:</b> 1mg/ml		<b>Subcellular Location:</b> Cytoplasm ,Nucleus
<b>Storage:</b> 0.01M TBS (pH7.4) with 1% BSA, 0.02% Proclin300 and 50% Glycerol. Shipped at 4°C. Store at -20°C for one year. Avoid repeated freeze/thaw cycles.		
<b>Background:</b> Acts as a cofactor for XPO1/CRM1-mediated nuclear export, perhaps as export complex scaffolding protein. Bound to XPO1/CRM1, stabilizes the XPO1/CRM1-cargo interaction. In the absence of Ran-bound GTP prevents binding of XPO1/CRM1 to the nuclear pore complex. Binds to CHC1/RCC1 and increases the guanine nucleotide exchange activity of CHC1/RCC1. Recruits XPO1/CRM1 to CHC1/RCC1 in a Ran-dependent manner. Negative regulator of TGF-beta signaling through interaction with the R-SMAD proteins, SMAD2 and SMAD3, and mediating their nuclear export.		

**— VALIDATION IMAGES —**

Tissue/cell: Rat testis tissue; 4% Paraformaldehyde-fixed and paraffin-embedded; Antigen retrieval: citrate buffer (0.01M, pH 6.0), Boiling bathing for 15min; Block endogenous peroxidase by 3% Hydrogen peroxide for 30min; Blocking buffer (normal goat serum, C-0005) at 37°C for 20 min; Incubation: Anti-RanBP3 Polyclonal Antibody, Unconjugated(bs-20113R) 1:200, overnight at 4°C, followed by conjugation to the secondary antibody(SP-0023) and DAB(C-0010) staining