

bs-18708R

[Primary Antibody]

MBOAT1 Rabbit pAb

Bioss
ANTIBODIES

www.bioss.com.cn

sales@bioss.com.cn

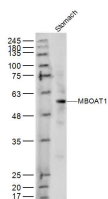
techsupport@bioss.com.cn

400-901-9800

— DATASHEET —

Host: Rabbit	Isotype: IgG	Applications: WB (1:500-2000)
Clonality: Polyclonal		
GeneID: 154141	SWISS: Q6ZNC8	
Target: MBOAT1		
Immunogen: KLH conjugated synthetic peptide derived from human MBOAT1: 151-250/495.		
Purification: affinity purified by Protein A		Reactivity: Mouse (predicted: Human, Rat, Pig, Cow, Dog, Horse)
Concentration: 1mg/ml		
Storage: 0.01M TBS (pH7.4) with 1% BSA, 0.02% Proclin300 and 50% Glycerol. Shipped at 4°C. Store at -20°C for one year. Avoid repeated freeze/thaw cycles.		
Background: This gene belongs to the membrane-bound O-acetyltransferase superfamily. The encoded transmembrane protein is an enzyme that transfers organic compounds, preferably from oleoyl-CoA, to hydroxyl groups of protein targets in membranes. A translocation disrupting this gene may be associated with brachydactyly syndactyly syndrome. Alternately spliced transcript variants have been described for this gene. [provided by RefSeq, Nov 2012]		
		Predicted MW.: 57 kDa
		Subcellular Location: Nucleus

— VALIDATION IMAGES —



Sample: Stomach (Mouse) Lysate at 40 ug
Primary: Anti-MBOAT1 (bs-18708R) at 1/300
dilution Secondary: IRDye800CW Goat Anti-
Rabbit IgG at 1/20000 dilution Predicted band
size: 57 kD Observed band size: 57 kD