

bs-2322R**[Primary Antibody]****Caspase-7 p11 Rabbit pAb****BioSS**
ANTIBODIES

www.bioss.com.cn

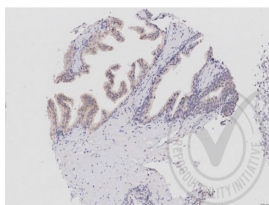
sales@bioss.com.cn

techsupport@bioss.com.cn

400-901-9800

— DATASHEET —

Host: Rabbit	Isotype: IgG	Applications: IHC-P (1:100-500) IHC-F (1:100-500) IF (1:100-500) Reactivity: Human (predicted: Mouse, Rat, Rabbit, Pig, Cow, Chicken, Dog, Horse) Predicted MW.: 11/33 kDa Subcellular Location: Cytoplasm ,Nucleus
Clonality: Polyclonal		
GeneID: 840	SWISS: P55210	
Target: Caspase-7 p11		
Immunogen: KLH conjugated synthetic peptide derived from human caspase-7 isoform alpha subunit p11: 211-303/303.		
Purification: affinity purified by Protein A		
Concentration: 1mg/ml		
Storage: 0.01M TBS (pH7.4) with 1% BSA, 0.02% Proclin300 and 50% Glycerol. Shipped at 4°C. Store at -20°C for one year. Avoid repeated freeze/thaw cycles.		
Background: This gene encodes a protein which is a member of the cysteine-aspartic acid protease (caspase) family. Sequential activation of caspases plays a central role in the execution-phase of cell apoptosis. Caspases exist as inactive proenzymes which undergo proteolytic processing at conserved aspartic residues to produce two subunits, large and small, that dimerize to form the active enzyme. The precursor of this caspase is cleaved by caspase3 and 10. It is activated upon cell death stimuli and induces apoptosis. Alternative splicing results in four transcript variants, encoding three distinct isoforms. [provided by RefSeq].		

— VALIDATION IMAGES —

Images provided the Independent Validation Program (badge number 029653) Formalin-fixed and paraffin embedded human prostate labeled with Rabbit Anti-Caspase-7 Polyclonal Antibody (bs-2322R) at 1:250 overnight at room temperature followed by conjugation to secondary antibody.