

**bs-4604R****[ Primary Antibody ]****Leptin Rabbit pAb****BioSS**  
**ANTIBODIES**

www.bioss.com.cn

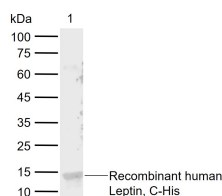
sales@bioss.com.cn

techsupport@bioss.com.cn

400-901-9800

**— DATASHEET —**

<b>Host:</b> Rabbit	<b>Isotype:</b> IgG	<b>Applications:</b> WB (1:500-2000)
<b>Clonality:</b> Polyclonal		
<b>GeneID:</b> 3952	<b>SWISS:</b> P41159	
<b>Target:</b> Leptin		
<b>Immunogen:</b> KLH conjugated synthetic peptide derived from human Leptin.: 101-167/167.		
<b>Purification:</b> affinity purified by Protein A		<b>Reactivity:</b> Human (predicted: Mouse, Rat)
<b>Concentration:</b> 1mg/ml		<b>Predicted MW.:</b> 16 kDa
<b>Storage:</b> 0.01M TBS (pH7.4) with 1% BSA, 0.02% Proclin300 and 50% Glycerol. Shipped at 4°C. Store at -20°C for one year. Avoid repeated freeze/thaw cycles.		<b>Subcellular Location:</b> Secreted
<b>Background:</b> Leptin, the product of the ob (obese) gene, is a 16kD protein consisting of 146 amino acid residues. Leptin is produced in the adipose tissue, and is considered to play an important role in appetite control, fat metabolism and regulation of body weight. It targets the central nervous system, particularly hypothalamus, affecting food intake. Leptin levels are high in most obese individuals. Studies have shown that it may also influence reproductive function.		

**— VALIDATION IMAGES —**

Sample: Lane 1: Recombinant human Leptin, C-His (bs-10888P) Primary: Anti-Leptin (bs-4604R) at 1/1000 dilution Secondary: IRDye800CW Goat Anti-Rabbit IgG at 1/20000 dilution Predicted band size: 16 kDa Observed band size: 14 kDa

**— SELECTED CITATIONS —**

- **[IF=7.3]** Yin Yongkui, et al. Identification of extracellular matrix-related biomarkers in colon adenocarcinoma by bioinformatics and experimental validation. FRONT IMMUNOL. 2024 Apr;15: WB ;Human. 38694509