

Somatostatin Receptor 5 Rabbit pAb

Catalog Number: bs-20417R

Target Protein: Somatostatin Receptor 5

Concentration: 1mg/ml

Form: Liquid

Host: Rabbit

Clonality: Polyclonal

Isotype: IgG

Applications: WB (1:500-2000)

Reactivity: Mouse, Rat (predicted:Human)

Predicted MW: 39 kDa

Entrez Gene: 6755

Swiss Prot: P35346

Source: KLH conjugated synthetic peptide derived from human Somatostatin Receptor 5: 1-100/3641.

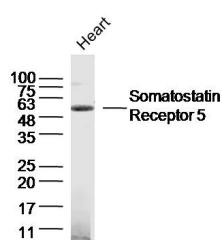
Purification: affinity purified by Protein A

Storage: 0.01M TBS (pH7.4) with 1% BSA, 0.02% Proclin300 and 50% Glycerol.

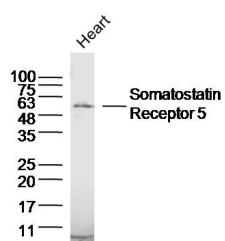
Shipped at 4°C. Store at -20°C for one year. Avoid repeated freeze/thaw cycles.

Background: Somatostatin and its related peptide cortistatin exert multiple biological actions on normal and tumoral tissue targets by interacting with somatostatin receptors (SSTRs). The protein encoded by this gene is one of the SSTRs, which is a multi-pass membrane protein and belongs to the G-protein coupled receptor 1 family. The activity of this receptor is mediated by G proteins which inhibit adenylyl cyclase, and different regions of this receptor molecule are required for the activation of different signaling pathways. A mutation in this gene results in somatostatin analog resistance. Alternatively spliced transcript variants have been identified in this gene.[provided by RefSeq, Feb 2010]

VALIDATION IMAGES



Sample: Heart (Rat) Lysate at 40 ug Primary: Anti-Somatostatin Receptor 5 (bs-20417R) at 1/300 dilution
Secondary: IRDye800CW Goat Anti-Rabbit IgG at 1/20000 dilution Predicted band size: 39 kD Observed band size: 50 kD



Sample: Heart (Mouse) Lysate at 40 ug Primary: Anti-Somatostatin Receptor 5 (bs-20417R) at 1/300 dilution
Secondary: IRDye800CW Goat Anti-Rabbit IgG at 1/20000 dilution Predicted band size: 39 kD Observed band size: 50 kD