
TTF1/NKX2-1 Rabbit pAb

Catalog Number: bs-10539R

Target Protein: TTF1/NKX2-1

Concentration: 1mg/ml

Form: Liquid

Host: Rabbit

Clonality: Polyclonal

Isotype: IgG

Applications: WB (1:500-2000), Flow-Cyt (1µg/Test)

Reactivity: Human, Mouse, Rat (predicted:Sheep, Cow, Chicken)

Predicted MW: 38 kDa

Entrez Gene: 7080

Swiss Prot: P43699

Source: KLH conjugated synthetic peptide derived from human TTF1: 121-220/371.

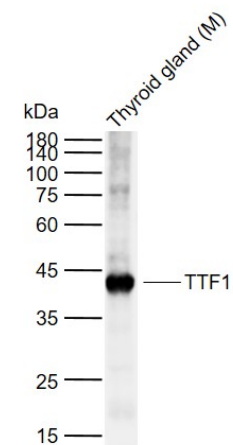
Purification: affinity purified by Protein A

Storage: 0.01M TBS (pH7.4) with 1% BSA, 0.02% Proclin300 and 50% Glycerol.

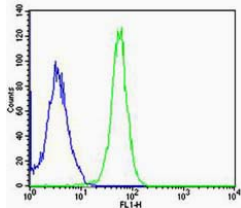
Shipped at 4°C. Store at -20°C for one year. Avoid repeated freeze/thaw cycles.

Background: This gene encodes a protein initially identified as a thyroid-specific transcription factor. The encoded protein binds to the thyroglobulin promoter and regulates the expression of thyroid-specific genes but has also been shown to regulate the expression of genes involved in morphogenesis. Mutations and deletions in this gene are associated with benign hereditary chorea, choreoathetosis, congenital hypothyroidism, and neonatal respiratory distress, and may be associated with thyroid cancer. Multiple transcript variants encoding different isoforms have been found for this gene. This gene shares the symbol/alias 'TTF1' with another gene, transcription termination factor 1, which plays a role in ribosomal gene transcription. [provided by RefSeq, Apr 2011]

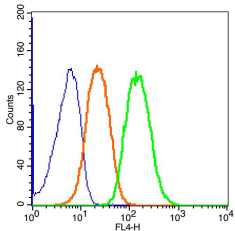
VALIDATION IMAGES



Sample: Lane 1: Mouse Thyroid gland tissue lysates Primary: Anti-TTF1 (bs-10539R) at 1/200 dilution
Secondary: IRDye800CW Goat Anti-Rabbit IgG at 1/20000 dilution Predicted band size: 38 kDa Observed band size: 42 kDa



Cell: A549 Concentration:1:100 Host/Isotype:Rabbit/IgG (blue) Flow cytometric analysis of Rabbit IgG isotype control (Cat#: bs-10539R) on A549(green) compared with control in the absence of primary antibody (blue) followed by Alexa Fluor 488-conjugated goat anti-rabbit IgG(H+L) secondary antibody .



Blank control(blue): RSC96 Cells(fixed with 2% paraformaldehyde (10 min) and then permeabilized with ice-cold 90% methanol for 30 min on ice). Primary Antibody: Rabbit Anti-TTF1/AF647 Conjugated antibody (bs-10539R-AF647), Dilution: 1µg in 100 µL 1X PBS containing 0.5% BSA; Isotype Control Antibody: Rabbit IgG/AF647(orange) ,used under the same conditions.