

**bs-20201R****[ Primary Antibody ]****Bioss**  
ANTIBODIES

www.bioss.com.cn

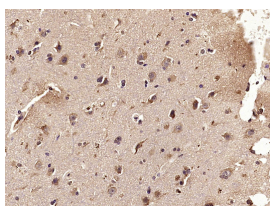
sales@bioss.com.cn

techsupport@bioss.com.cn

400-901-9800

**CCL2 Rabbit pAb****— DATASHEET —**

<b>Host:</b> Rabbit	<b>Isotype:</b> IgG	<b>Applications:</b> <b>IHC-P</b> (1:100-500) <b>IHC-F</b> (1:100-500) <b>IF</b> (1:100-500)
<b>Clonality:</b> Polyclonal		
<b>GeneID:</b> 6347	<b>SWISS:</b> P13500	
<b>Target:</b> CCL2		<b>Reactivity:</b> Human
<b>Immunogen:</b> KLH conjugated synthetic peptide derived from human CCL2: 25-99/99.		
<b>Purification:</b> affinity purified by Protein A		<b>Predicted MW.:</b> 8.7 kDa
<b>Concentration:</b> 1mg/ml		<b>Subcellular Location:</b> Secreted
<b>Storage:</b> 0.01M TBS (pH7.4) with 1% BSA, 0.02% Proclin300 and 50% Glycerol. Shipped at 4°C. Store at -20°C for one year. Avoid repeated freeze/thaw cycles.		
<b>Background:</b> Chemotactic factor that attracts monocytes and basophils but not neutrophils or eosinophils. Augments monocyte anti-tumor activity. Has been implicated in the pathogenesis of diseases characterized by monocytic infiltrates, like psoriasis, rheumatoid arthritis or atherosclerosis. May be involved in the recruitment of monocytes into the arterial wall during the disease process of atherosclerosis. Monomer or homodimer; in equilibrium. Binds to CCR2 and CCR4. Is tethered on endothelial cells by glycosaminoglycan (GAG) side chains of proteoglycans. Processing at the N-terminus can regulate receptor and targetcell selectivity. Deletion of the N-terminal residue converts it from an activator of basophil to an eosinophil chemoattractant. Genetic variations in CCL2 determine Mycobacterium tuberculosis susceptibility. Belongs to the intercrine beta (chemokine CC) family. The MCP-1 (the monocyte chemotactic protein1) has many pits that regulates the function toward sex to turn to record the factor, it can induce to have relation with inflammation with the immunity various genes turn to record. The immunity MCP-1 set turns the male signal to mainly locate the afterbirth syrup inside.		

**— VALIDATION IMAGES —**

Paraformaldehyde-fixed, paraffin embedded (Human brain glioma); Antigen retrieval by microwave in sodium citrate buffer (pH6.0); Block endogenous peroxidase by 3% hydrogen peroxide for 30 minutes; Blocking buffer (3% BSA) at RT for 30min; Antibody incubation with (CCL2) Polyclonal Antibody, Unconjugated (bs-20201R) at 1:400 overnight at 4°C, followed by conjugation to the secondary antibody (labeled with HRP) and DAB staining.

**— SELECTED CITATIONS —**

- **[IF=10.19]** Xingliang Dai. et al. Crosstalk between microglia and neural stem cells influences the relapse of

Important Note: This product as supplied is intended for research use only, not for use in human, therapeutic or diagnostic applications.

- glioblastoma in GBM immunological microenvironment. CLIN IMMUNOL. 2023 Jun;251:109333 IHC ;Human. 37088298
- **[IF=7.126]** Vendrov AE et al. NOXA1-dependent NADPH oxidase regulates redox signaling and phenotype of vascular smooth muscle cell during atherogenesis. Redox Biol. (2018) Redox Biol. 21:101063. IF ;Mouse. 30576919
  - **[IF=5.6]** Xiumeng Hua. et al. STING regulates the transformation of the proinflammatory macrophage phenotype by HIF1A into autoimmune myocarditis. INT IMMUNOPHARMACOL. 2023 Aug;121:110523 IHC ;Mouse. 37354779
  - **[IF=5.037]** Yuhua Li. et al. Study on the mechanism of Yupingfeng powder in the treatment of immunosuppression based on UPLC-QTOF-MS, network pharmacology and molecular biology verification. Life Sci. 2022 Jan;289:120211 WB ;Mouse. 34875251
  - **[IF=3.337]** Xing Liu. et al. Construction of the Prediction Model for Locally Advanced Rectal Cancer Following Neoadjuvant Chemoradiotherapy Based on Pretreatment Tumor-Infiltrating Macrophage-Associated Biomarkers. Oncotargets Ther. 2021 Apr;14:2599-2610 IHC ;Human. 33880038