

bs-10859R**[Primary Antibody]****BioSS**
ANTIBODIES

www.bioss.com.cn

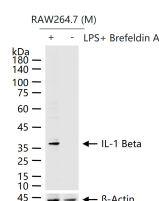
sales@bioss.com.cn

techsupport@bioss.com.cn

400-901-9800

IL-1 Beta Rabbit pAb**— DATASHEET —**

Host: Rabbit Clonality: Polyclonal GeneID: 3553 Target: IL-1 Beta Immunogen: Recombinant human IL-1B protein: 117-269/269 (C-6x His-Tag). Purification: affinity purified by Protein A Concentration: 1mg/ml Storage: 0.01M TBS (pH7.4) with 1% BSA, 0.02% Proclin300 and 50% Glycerol. Shipped at 4°C. Store at -20°C for one year. Avoid repeated freeze/thaw cycles. Background: The protein encoded by this gene is a member of the interleukin 1 cytokine family. This cytokine is produced by activated macrophages as a proprotein, which is proteolytically processed to its active form by caspase 1 (CASP1/ICE). This cytokine is an important mediator of the inflammatory response, and is involved in a variety of cellular activities, including cell proliferation, differentiation, and apoptosis. The induction of cyclooxygenase-2 (PTGS2/COX2) by this cytokine in the central nervous system (CNS) is found to contribute to inflammatory pain hypersensitivity. This gene and eight other interleukin 1 family genes form a cytokine gene cluster on chromosome 2. [provided by RefSeq, Jul 2008].	Isotype: IgG SWISS: P01584	Applications: WB (1:500-2000) Reactivity: Human, Mouse (predicted: Bee) Predicted MW.: 17/32 kDa Subcellular Location: Secreted
---	---	--

— VALIDATION IMAGES —

RAW264.7 (M) cells were treated with or without LPS (100ng/ml) for 6 h, then with Brefeldin A (300ng/ml) added after 3 h, 25 µg total protein per lane of cell lysates (see on figure) probed with IL-1 Beta polyclonal antibody, unconjugated (bs-10859R) at 1:1000 dilution and 4°C overnight incubation. Followed by conjugated secondary antibody incubation at r.t. for 60 min.

— SELECTED CITATIONS —

- **[IF=5.2]** Lemiao Zhong. et al. Mycoplasma synoviae induce spleen tissue damage and inflammatory response of chicken through oxidative stress and apoptosis. VIRULENCE. 2023 Nov 16 WB ;Chicken. 37963095
- **[IF=2.838]** Li, Lu. et al. Luteolin alleviates inflammation and autophagy of hippocampus induced by cerebral ischemia/reperfusion by activating PPAR gamma in rats. BMC Complementary Medicine and Therapies. 2022 Dec;22(1):1-13 ELISA ;Rat. 35778706
- **[IF=1.813]** Jiang Yan. et al. Exploring the Mechanism of Berberine Intervention in Ulcerative Colitis from the Perspective of Inflammation and Immunity Based on Systemic Pharmacology. Evid-Based Compl Alt. 2021;2021:9970240

Important Note: This product as supplied is intended for research use only, not for use in human, therapeutic or diagnostic applications.

IHC ;Rat. 34211579