

bs-21131R

[Primary Antibody]

ODAM Rabbit pAb

BioSS
ANTIBODIES

www.bioss.com.cn

sales@bioss.com.cn

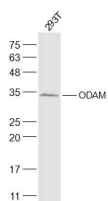
techsupport@bioss.com.cn

400-901-9800

— DATASHEET —

Host: Rabbit	Isotype: IgG	Applications: WB (1:500-2000)
Clonality: Polyclonal		Reactivity: Human (predicted: Chimpanzee)
GeneID: 54959	SWISS: A1E959	
Target: ODA		
Immunogen: KLH conjugated synthetic peptide derived from human ODA: 181-279/279.		Predicted MW.: 29 kDa
Purification: affinity purified by Protein A		Subcellular Location: Secreted ,Cytoplasm Nucleus
Concentration: 1mg/ml		
Storage: Preservative: 0.02% Proclin300, Constituents: 1% BSA, 0.01M PBS, pH7.4. Shipped at 4°C. Store at -20°C for one year. Avoid repeated freeze/thaw cycles.		

— VALIDATION IMAGES —



Sample: 293T(Human) Cell Lysate at 30 ug
Primary: Anti-ODA (bs-21131R) at 1/500
dilution Secondary: IRDye800CW Goat Anti-
Rabbit IgG at 1/20000 dilution Predicted band
size: 29 kD Observed band size: 34 kD