

**bs-6574R****[ Primary Antibody ]****RRBP1 Rabbit pAb****Bioss**  
ANTIBODIES

www.bioss.com.cn

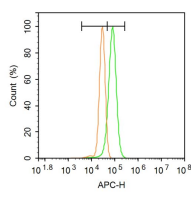
sales@bioss.com.cn

techsupport@bioss.com.cn

400-901-9800

**DATASHEET**

<b>Host:</b> Rabbit	<b>Isotype:</b> IgG	<b>Applications:</b> Flow-Cyt (3ug/Test)
<b>Clonality:</b> Polyclonal		<b>Reactivity:</b> Human (predicted: Mouse, Rat, Pig, Cow, Dog, Horse)
<b>GeneID:</b> 6238	<b>SWISS:</b> Q9P2E9	
<b>Target:</b> RRBP1		<b>Predicted MW.:</b> 152 kDa
<b>Immunogen:</b> KLH conjugated synthetic peptide derived from human RRBP1: 641-740/1410.		<b>Subcellular Location:</b> Cell membrane ,Cytoplasm
<b>Purification:</b> affinity purified by Protein A		
<b>Concentration:</b> 1mg/ml		
<b>Storage:</b> 0.01M TBS (pH7.4) with 1% BSA, 0.02% Proclin300 and 50% Glycerol. Shipped at 4°C. Store at -20°C for one year. Avoid repeated freeze/thaw cycles.		
<b>Background:</b> RRBP1 (Ribosome-binding protein 1) acts as a ribosome receptor and mediates interaction between the ribosome and the endoplasmic reticulum membrane.		

**VALIDATION IMAGES**

Blank control: A431. Primary Antibody (green line): Rabbit Anti-RRBP1 antibody (bs-6574R)  
Dilution: 1 $\mu$ g /10<sup>6</sup> cells; Isotype Control Antibody (orange line): Rabbit IgG . Secondary Antibody: Goat anti-rabbit IgG-AF647 Dilution: 1 $\mu$ g /test. Protocol The cells were fixed with 4% PFA (10min at room temperature)and then permeabilized with 0.1% PBST for 20 min at room temperature. The cells were then incubated in 5%BSA to block non-specific protein-protein interactions for 30 min at room temperature.Cells stained with Primary Antibody for 30 min at room temperature. The secondary antibody used for 40 min at room temperature. Acquisition of 20,000 events was performed.