

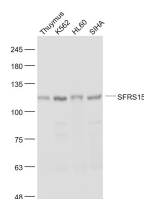
**bs-21109R****[ Primary Antibody ]****SFRS15 Rabbit pAb****Bioss**  
**ANTIBODIES**

www.bioss.com.cn

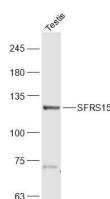
sales@bioss.com.cn

techsupport@bioss.com.cn

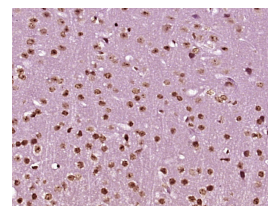
400-901-9800

**DATASHEET****Host:** Rabbit**Isotype:** IgG**Clonality:** Polyclonal**GeneID:** 57466**SWISS:** O95104**Target:** SFRS15**Immunogen:** KLH conjugated synthetic peptide derived from human SFRS15: 501-600/1147.**Purification:** affinity purified by Protein A**Concentration:** 1mg/ml**Storage:** Preservative: 0.02% Proclin300, Constituents: 1% BSA, 0.01M PBS, pH7.4.  
Shipped at 4°C. Store at -20°C for one year. Avoid repeated freeze/thaw cycles.**Background:** This gene likely encodes a member of the arginine/serine-rich splicing factor family. A similar protein in Rat appears to bind the large subunit of RNA polymerase II and provide a link between transcription and pre-mRNA splicing. Alternatively spliced transcript variants have been described. [provided by RefSeq, Feb 2009]**Applications:** **WB** (1:500-2000)**IHC-P** (1:100-500)**IHC-F** (1:100-500)**IF** (1:100-500)**Reactivity:** Human, Mouse  
(predicted: Rat, Rabbit, Pig, Sheep, Cow, Dog, Horse)**Predicted MW.:** 126 kDa**Subcellular Location:** Nucleus**VALIDATION IMAGES**

Sample: Thymus (Mouse) Lysate at 40 ug  
K562(Human) Cell Lysate at 30 ug HL60(Human)  
Cell Lysate at 30 ug SIHA(Human) Cell Lysate at  
30 ug Primary: Anti- SFRS15 (bs-21109R) at  
1/1000 dilution Secondary: IRDye800CW Goat  
Anti-Rabbit IgG at 1/20000 dilution Predicted  
band size: 126 kD Observed band size: 126 kD



Sample: Testis (Mouse) Lysate at 40 ug Primary:  
Anti-SFRS15 (bs-21109R) at 1/1000 dilution  
Secondary: IRDye800CW Goat Anti-Rabbit IgG at  
1/20000 dilution Predicted band size: 126 kD  
Observed band size: 126 kD



Paraformaldehyde-fixed, paraffin embedded  
(mouse brain tissue); Antigen retrieval by boiling  
in sodium citrate buffer (pH6.0) for 15min; Block  
endogenous peroxidase by 3% hydrogen  
peroxide for 20 minutes; Blocking buffer (normal  
goat serum) at 37°C for 30min; Antibody  
incubation with (SFRS15) Polyclonal Antibody,  
Unconjugated (bs-21109R) at 1:400 overnight at  
4°C, followed by operating according to SP  
Kit(Rabbit) (sp-0023) instructions and DAB  
staining.