

TOX1 Rabbit pAb

Catalog Number: bs-17327R

Target Protein: TOX1

Concentration: 1mg/ml

Form: Liquid

Host: Rabbit

Clonality: Polyclonal

Isotype: IgG

Applications: WB (1:500-2000)

Reactivity: Mouse (predicted:Human, Rat, Pig, Cow, Dog, Horse)

Predicted MW: 58 kDa

Entrez Gene: 9760

Swiss Prot: O94900

Source: KLH conjugated synthetic peptide derived from human TOX1: 1-100/526.

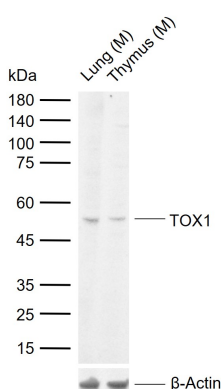
Purification: affinity purified by Protein A

Storage: 0.01M TBS (pH7.4) with 1% BSA, 0.02% Proclin300 and 50% Glycerol.

Shipped at 4°C. Store at -20°C for one year. Avoid repeated freeze/thaw cycles.

Background: The protein encoded by this gene contains a HMG box DNA binding domain. HMG boxes are found in many eukaryotic proteins involved in chromatin assembly, transcription and replication. This protein may function to regulate T-cell development.[provided by RefSeq, Apr 2009]

VALIDATION IMAGES



Sample: Lane 1: Mouse Lung tissue lysates Lane 2: Mouse Thymus tissue lysates Primary: Anti-TOX1 (bs-17327R) at 1/1000 dilution Secondary: IRDye800CW Goat Anti-Rabbit IgG at 1/20000 dilution Predicted band size: 58 kDa Observed band size: 52 kDa

PRODUCT SPECIFIC PUBLICATIONS

[IF=1.794] Fan HN et al. Sanguinarine inhibits the tumorigenesis of gastric cancer by regulating the TOX/DNA-PKcs/KU70/80 pathway. Pathol Res Pract. 2019 Nov;215(11):152677. WB ; Human . 31591052