

bs-17319R**[Primary Antibody]****TOMM70A Rabbit pAb****Bioss**
ANTIBODIES

www.bioss.com.cn

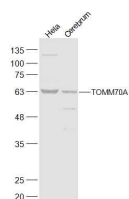
sales@bioss.com.cn

techsupport@bioss.com.cn

400-901-9800

— DATASHEET —

Host: Rabbit	Isotype: IgG	Applications: WB (1:500-2000)
Clonality: Polyclonal		Reactivity: Human, Mouse (predicted: Rat)
GeneID: 9868	SWISS: O94826	
Target: TOMM70A		Predicted MW.: 67 kDa
Immunogen: KLH conjugated synthetic peptide derived from human TOMM70A: 21-120/608.		Subcellular Location: Cytoplasm
Purification: affinity purified by Protein A		
Concentration: 1mg/ml		
Storage: 0.01M TBS (pH7.4) with 1% BSA, 0.02% Proclin300 and 50% Glycerol. Shipped at 4°C. Store at -20°C for one year. Avoid repeated freeze/thaw cycles.		
Background: This gene encodes an import receptor of the outer mitochondrial membrane that is part of the translocase of the outer membrane complex. This protein is involved in the import of mitochondrial precursor proteins. [provided by RefSeq, Oct 2011]		

— VALIDATION IMAGES —

Sample: Hela Cell Lysate at 30 ug Cerebrum
(Mouse) Lysate at 40 ug Primary: Anti-TOMM70A
(bs-17319R) at 1/300 dilution Secondary:
IRDye800CW Goat Anti-Rabbit IgG at 1/20000
dilution Predicted band size: 67 kD Observed
band size: 67 kD