

bs-17316R**[Primary Antibody]****SGK2 Rabbit pAb****BioSS**
ANTIBODIES

www.bioss.com.cn

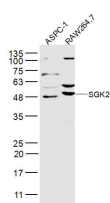
sales@bioss.com.cn

techsupport@bioss.com.cn

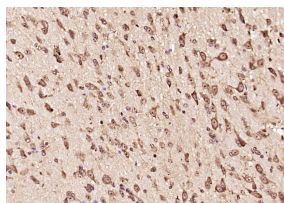
400-901-9800

— DATASHEET —

Host: Rabbit	Isotype: IgG	Applications: WB (1:500-2000) IHC-P (1:100-500) IHC-F (1:100-500) IF (1:100-500) Reactivity: Human, Mouse (predicted: Rat, Rabbit, Sheep, Cow, Horse) Predicted MW.: 48 kDa Subcellular Location: Nucleus
Clonality: Polyclonal		
GeneID: 10110	SWISS: Q9HBY8	
Target: SGK2		
Immunogen: KLH conjugated synthetic peptide derived from human SGK2: 301-400/427.		
Purification: affinity purified by Protein A		
Concentration: 1mg/ml		
Storage: 0.01M TBS (pH7.4) with 1% BSA, 0.02% Proclin300 and 50% Glycerol. Shipped at 4°C. Store at -20°C for one year. Avoid repeated freeze/thaw cycles.		
Background: This gene encodes a serine/threonine protein kinase. Although this gene product is similar to serum- and glucocorticoid-induced protein kinase (SGK), this gene is not induced by serum or glucocorticoids. This gene is induced in response to signals that activate phosphatidylinositol 3-kinase, which is also true for SGK. Alternative splicing results in multiple transcript variants. [provided by RefSeq, Nov 2010]		

— VALIDATION IMAGES —

Sample: ASPC-1(Human) Cell Lysate at 30 ug
RAW264.7(Mouse) Cell Lysate at 30 ug Primary:
Anti-SGK2 (bs-17316R) at 1/300 dilution
Secondary: IRDye800CW Goat Anti-Rabbit IgG at
1/20000 dilution Predicted band size: 48 kD
Observed band size: 48/50 kD



Paraformaldehyde-fixed, paraffin embedded (mouse brain); Antigen retrieval by boiling in sodium citrate buffer (pH6.0) for 15min; Block endogenous peroxidase by 3% hydrogen peroxide for 20 minutes; Blocking buffer (normal goat serum) at 37°C for 30min; Antibody incubation with (SGK2) Polyclonal Antibody, Unconjugated (bs-17316R) at 1:200 overnight at 4°C, followed by operating according to SP Kit(Rabbit) (sp-0023) instructions and DAB staining.