

bs-17315R**[Primary Antibody]****SGK196 Rabbit pAb****Bioss**
ANTIBODIES

www.bioss.com.cn

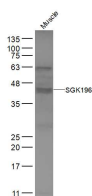
sales@bioss.com.cn

techsupport@bioss.com.cn

400-901-9800

— DATASHEET —

Host: Rabbit	Isotype: IgG	Applications: WB (1:500-2000)
Clonality: Polyclonal		Reactivity: Mouse (predicted: Human, Rat)
GeneID: 84197	SWISS: Q9H5K3	
Target: SGK196		Predicted MW.: 40 kDa
Immunogen: KLH conjugated synthetic peptide derived from human SGK196: 151-250/350.		Subcellular Location: Cell membrane
Purification: affinity purified by Protein A		
Concentration: 1mg/ml		
Storage: 0.01M TBS (pH7.4) with 1% BSA, 0.02% Proclin300 and 50% Glycerol. Shipped at 4°C. Store at -20°C for one year. Avoid repeated freeze/thaw cycles.		
Background: This gene encodes a protein that may be involved in the presentation of the laminin-binding O-linked carbohydrate chain of alpha-dystroglycan (a-DG), which forms transmembrane linkages between the extracellular matrix and the exoskeleton. Some pathogens use this O-linked carbohydrate unit for host entry. Loss of function compound heterozygous mutations in this gene were found in a human patient affected by the Walker-Warburg syndrome (WWS) phenotype. Mice lacking this gene contain misplaced neurons (heterotopia) in some regions of the brain, possibly from defects in neuronal migration. Alternative splicing of this gene results in multiple transcript variants. [provided by RefSeq, May 2013]		

— VALIDATION IMAGES —

Sample: Muscle (Mouse) Lysate at 40 ug Primary:

Anti-SGK196 (bs-17315R) at 1/300 dilution

Secondary: IRDye800CW Goat Anti-Rabbit IgG at

1/20000 dilution Predicted band size: 40 kD

Observed band size: 40 kD