

bs-23125R**[Primary Antibody]****Cux2 Rabbit pAb****Bioss**
ANTIBODIES

www.bioss.com.cn

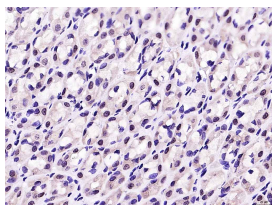
sales@bioss.com.cn

techsupport@bioss.com.cn

400-901-9800

— DATASHEET —

Host: Rabbit	Isotype: IgG	Applications: IHC-P (1:100-500) IHC-F (1:100-500) IF (1:100-500) Reactivity: Human, Rat (predicted: Mouse, Rabbit, Pig, Cow) Predicted MW.: 162 kDa Subcellular Location: Nucleus
Clonality: Polyclonal		
GeneID: 23316	SWISS: Q14529	
Target: Cux2		
Immunogen: KLH conjugated synthetic peptide derived from human Cux2: 741-840/1486.		
Purification: affinity purified by Protein A		
Concentration: 1mg/ml		
Storage: 0.01M TBS (pH7.4) with 1% BSA, 0.02% Proclin300 and 50% Glycerol. Shipped at 4°C. Store at -20°C for one year. Avoid repeated freeze/thaw cycles.		
Background: Cux2 is a marker for cortical subpopulations. Cux2 is an orthologue of the Drosophila cut gene, which encodes a homeodomain protein involved in neuronal specification. During cortical development Cux2 identifies two subpopulations with different spatial origins, migratory behaviours and phenotypic characteristics: (i) a population of interneurons, which invades the pallium from the subpallium; and (ii) a neuronal population produced in the pallium around embryonic day 11.5, which divides in the SVZ and accumulates in the intermediate zone (IZ). Subsequently, Cux2 is a marker of upper cortical layers.		

— VALIDATION IMAGES —

Paraformaldehyde-fixed, paraffin embedded (rat stomach); Antigen retrieval by boiling in sodium citrate buffer (pH6.0) for 15min; Block endogenous peroxidase by 3% hydrogen peroxide for 20 minutes; Blocking buffer (normal goat serum) at 37°C for 30min; Antibody incubation with (Cux2) Polyclonal Antibody, Unconjugated (bs-23125R) at 1:200 overnight at 4°C, followed by operating according to SP Kit(Rabbit) (sp-0023) instructions and DAB staining.