

bs-23171R**[Primary Antibody]****RAF1 Rabbit pAb****Bioss**
ANTIBODIES

www.bioss.com.cn

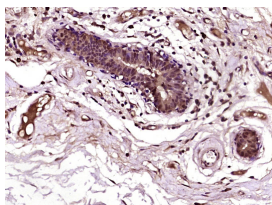
sales@bioss.com.cn

techsupport@bioss.com.cn

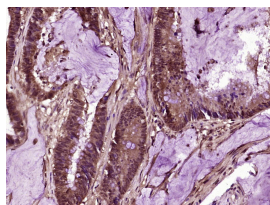
400-901-9800

— DATASHEET —

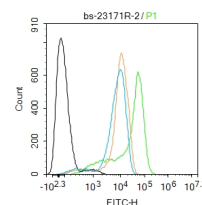
Host: Rabbit	Isotype: IgG	Applications: IHC-P (1:100-500)
Clonality: Polyclonal		IHC-F (1:100-500)
GeneID: 5894	SWISS: P04049	IF (1:100-500)
Target: RAF1		Flow-Cyt (2ug/Test)
Immunogen: KLH conjugated synthetic peptide derived from human RAF1: 201-300/648.		Reactivity: Human, Mouse (predicted: Rat, Rabbit, Pig, Sheep, Cow, Dog, Horse)
Purification: affinity purified by Protein A		Predicted MW.: 73 kDa
Concentration: 1mg/ml		Subcellular Location: Cell membrane ,Cytoplasm ,Nucleus
Storage: 0.01M TBS (pH7.4) with 1% BSA, 0.02% Proclin300 and 50% Glycerol. Shipped at 4°C. Store at -20°C for one year. Avoid repeated freeze/thaw cycles.		
Background: The Raf family of serine/threonine specific kinases is comprised of three members (aRaf, bRaf, and cRaf) that play a critical role in regulating cell growth and differentiation, and couple growth factor receptor stimulation to nuclear transcription factors via the Ras/mitogen activated protein kinase (MAPK) pathway. cRaf kinase (also known as Raf1) is a small GTPase like kinase of 73 kDa, and is a signal transducer of multiple extracellular stimuli that is regulated by several pathways, and that once activated, phosphorylates MEK which in turn phosphorylates ERK. Raf1 is involved in the transduction of mitogenic signals from the cell membrane to the nucleus. It is part of the Ras dependent signaling pathway from receptors to the nucleus.		

— VALIDATION IMAGES —

Paraformaldehyde-fixed, paraffin embedded (Human breast carcinoma); Antigen retrieval by boiling in sodium citrate buffer (pH6.0) for 15min; Block endogenous peroxidase by 3% hydrogen peroxide for 20 minutes; Blocking buffer (normal goat serum) at 37°C for 30min; Antibody incubation with (C-RAF/Raf-1) Polyclonal Antibody, Unconjugated (bs-23171R) at 1:400 overnight at 4°C, followed by operating according to SP Kit(Rabbit) (sp-0023) instructions and DAB staining.



Paraformaldehyde-fixed, paraffin embedded (Human colon carcinoma); Antigen retrieval by boiling in sodium citrate buffer (pH6.0) for 15min; Block endogenous peroxidase by 3% hydrogen peroxide for 20 minutes; Blocking buffer (normal goat serum) at 37°C for 30min; Antibody incubation with (C-RAF/Raf-1) Polyclonal Antibody, Unconjugated (bs-23171R) at 1:400 overnight at 4°C, followed by operating according to SP Kit(Rabbit) (sp-0023) instructions and DAB staining.



Blank control:THP-1. Primary Antibody (green line): Rabbit Anti-C-RAF antibody (bs-23171R) Dilution: 2μg /10⁶ cells; Isotype Control Antibody (orange line): Rabbit IgG . Secondary Antibody : Goat anti-rabbit IgG-FITC Dilution: 1μg /test. Protocol The cells were fixed with 4% PFA (10min at room temperature) and then permeabilized with 0.1% PBST for 20 min at room temperature. The cells were then incubated in 5%BSA to block non-specific protein-protein interactions for 30 min at room temperature .Cells stained with Primary Antibody for 30 min at room temperature. The secondary antibody used for 40 min at room temperature. Acquisition of 20,000 events was performed.

— SELECTED CITATIONS —

- **[IF=4.039]** Wen-Bo Zhang. et al. Down-regulating of MFN2 promotes vascular calcification via regulating RAS-RAF-

Important Note: This product as supplied is intended for research use only, not for use in human, therapeutic or diagnostic applications.

ERK1/2 pathway. INT J CARDIOL. 2022 Jun;; WB ;Mouse. 35716948