

**bs-3626R****[ Primary Antibody ]****PKC gamma Rabbit pAb****Bioss**  
**ANTIBODIES**

www.bioss.com.cn

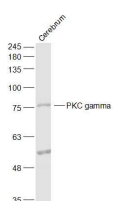
sales@bioss.com.cn

techsupport@bioss.com.cn

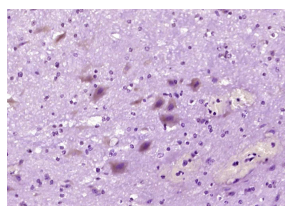
400-901-9800

**— DATASHEET —**

<b>Host:</b> Rabbit	<b>Isotype:</b> IgG	<b>Applications:</b> <b>WB</b> (1:500-2000)
<b>Clonality:</b> Polyclonal		<b>IHC-P</b> (1:100-500)
<b>GeneID:</b> 5582	<b>SWISS:</b> P05129	<b>IHC-F</b> (1:100-500)
<b>Target:</b> PKC gamma		<b>IF</b> (1:100-500)
<b>Immunogen:</b> KLH conjugated synthetic peptide derived from human PKC gamma: 151-250/697.		<b>Reactivity:</b> Mouse, Rat (predicted: Human, Rabbit, Pig, Cow, Chicken, Dog, Horse)
<b>Purification:</b> affinity purified by Protein A		<b>Predicted MW.:</b> 78 kDa
<b>Concentration:</b> 1mg/ml		<b>Subcellular Location:</b> Cell membrane ,Cytoplasm
<b>Storage:</b> 0.01M TBS (pH7.4) with 1% BSA, 0.02% Proclin300 and 50% Glycerol. Shipped at 4°C. Store at -20°C for one year. Avoid repeated freeze/thaw cycles.		
<b>Background:</b> Protein kinase C (PKC) is a family of serine- and threonine-specific protein kinases that can be activated by calcium and second messenger diacylglycerol. PKC family members phosphorylate a wide variety of protein targets and are known to be involved in diverse cellular signaling pathways. PKC also serve as major receptors for phorbol esters, a class of tumor promoters. Each member of the PKC family has a specific expression profile and is believed to play distinct roles in cells. The protein encoded by this gene is one of the PKC family members. This protein kinase is expressed solely in the brain and spinal cord and its localization is restricted to neurons. It has been demonstrated that several neuronal functions, including long term potentiation (LTP) and long term depression (LTD), specifically require this kinase. Knockout studies in mice also suggest that this kinase may be involved in neuropathic pain development. Defects in this protein have been associated with neurodegenerative disorder spinocerebellar ataxia-14 (SCA14). [provided by RefSeq, Jul 2008]		

**— VALIDATION IMAGES —**

Sample: Cerebrum (Rat) Lysate at 40 ug Primary:  
Anti-PKC gamma (bs-3626R) at 1/1000 dilution  
Secondary: IRDye800CW Goat Anti-Rabbit IgG at  
1/20000 dilution Predicted band size: 78 kD  
Observed band size: 78 kD



Paraformaldehyde-fixed, paraffin embedded  
(mouse cerebellum); Antigen retrieval by boiling  
in sodium citrate buffer (pH6.0) for 15min; Block  
endogenous peroxidase by 3% hydrogen  
peroxide for 20 minutes; Blocking buffer (normal  
goat serum) at 37°C for 30min; Antibody  
incubation with (PKC gamma) Polyclonal  
Antibody, Unconjugated (bs-3626R) at 1:200  
overnight at 4°C, followed by operating  
according to SP Kit(Rabbit) (sp-0023)  
instructions and DAB staining.

**— SELECTED CITATIONS —**

- **[IF=3.7]** Zhaoda Duan. et al. Scutellarin Attenuates Microglia Activation in LPS-Induced BV-2 Microglia via

Important Note: This product as supplied is intended for research use only, not for use in human, therapeutic or diagnostic applications.

miRNA-7036a/MAPT/PRKCG/ERK Axis. Advanced Biology. 2024 Apr;;2400123 WB ;Mouse. 38684459