

**bs-23169R****[ Primary Antibody ]****GnRHR Rabbit pAb****Bioss**  
**ANTIBODIES**

www.bioss.com.cn

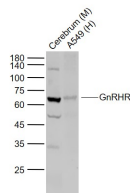
sales@bioss.com.cn

techsupport@bioss.com.cn

400-901-9800

**— DATASHEET —**

<b>Host:</b> Rabbit	<b>Isotype:</b> IgG	<b>Applications:</b> WB (1:500-2000)
<b>Clonality:</b> Polyclonal		<b>Reactivity:</b> Human, Mouse (predicted: Rat, Pig, Cow, Dog, Horse)
<b>GeneID:</b> 2798	<b>SWISS:</b> P30968	
<b>Target:</b> GnRHR		<b>Predicted MW.:</b> 36 kDa
<b>Immunogen:</b> KLH conjugated synthetic peptide derived from human GnRHR: 1-100/328. < Extracellular >		<b>Subcellular Location:</b> Secreted
<b>Purification:</b> affinity purified by Protein A		
<b>Concentration:</b> 1mg/ml		
<b>Storage:</b> 0.01M TBS (pH7.4) with 1% BSA, 0.02% Proclin300 and 50% Glycerol. Shipped at 4°C. Store at -20°C for one year. Avoid repeated freeze/thaw cycles.		
<b>Background:</b> Gonadotropin Releasing Hormone (GnRH) is down-regulated by hCG and believed to be an autocrine factor that regulates the ovary. The Gonadotropin Releasing Hormone Receptor (GnRHR) is synthesized in the pituitary gland. Activin A has been shown to stimulate the synthesis of GnRHR, illustrating a possible mechanism for the modulation of gonadotropin responsiveness to GnRH.		

**— VALIDATION IMAGES —**

Sample: Lane 1: Cerebrum (Mouse) Lysate at 40  
ug Lane 2: A549 (Human) Cell Lysate at 30 ug  
Primary: Anti-GnRHR (bs-23169R) at 1/1000  
dilution Secondary: IRDye800CW Goat Anti-  
Rabbit IgG at 1/20000 dilution Predicted band  
size: 62-70 kD Observed band size: 63 kD