

---

## ADAM9 Rabbit pAb

Catalog Number: bs-20104R

Target Protein: ADAM9

Concentration: 1mg/ml

Form: Liquid

Host: Rabbit

Clonality: Polyclonal

Isotype: IgG

Applications: WB (1:500-2000)

Reactivity: Human (predicted:Mouse, Rat, Rabbit, Sheep, Cow, Dog)

Predicted MW: 88 kDa

Subcellular: Secreted, Cell membrane

Locations:

Entrez Gene: 8754

Swiss Prot: Q13443

Source: KLH conjugated synthetic peptide derived from human ADAM9: 601-700/819.

Purification: affinity purified by Protein A

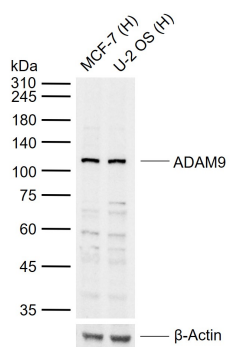
Storage: Preservative: 0.02% Proclin300, Constituents: 1% BSA, 0.01M PBS, pH7.4.

Shipped at 4°C. Store at -20°C for one year. Avoid repeated freeze/thaw cycles.

**Background:** This gene encodes a member of the ADAM (a disintegrin and metalloprotease domain) family. Members of this family are membrane-anchored proteins structurally related to snake venom disintegrins, and have been implicated in a variety of biological processes involving cell-cell and cell-matrix interactions, including fertilization, muscle development, and neurogenesis. The protein encoded by this gene interacts with SH3 domain-containing proteins, binds mitotic arrest deficient 2 beta protein, and is also involved in TPA-induced ectodomain shedding of membrane-anchored heparin-binding EGF-like growth factor. Several alternatively spliced transcript variants have been identified for this gene. [provided by RefSeq].

### VALIDATION IMAGES

---



Sample: Lane 1: Human MCF-7 cell lysates Lane 2: Human U-2 OS cell lysates Primary: Anti-ADAM9 (bs-20104R) at 1/1000 dilution Secondary: IRDye800CW Goat Anti-Rabbit IgG at 1/20000 dilution Predicted band size: 88 kDa Observed band size: 110 kDa