

bs-23168R**[Primary Antibody]****GnRHR Rabbit pAb****Bioss**
ANTIBODIES

www.bioss.com.cn

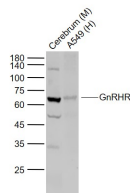
sales@bioss.com.cn

techsupport@bioss.com.cn

400-901-9800

— DATASHEET —

Host: Rabbit	Isotype: IgG	Applications: WB (1:500-2000)
Clonality: Polyclonal		Reactivity: Human, Mouse (predicted: Rat, Pig, Cow, Dog, Horse)
GeneID: 2798	SWISS: P30968	
Target: GnRHR		Predicted MW.: 36 kDa
Immunogen: KLH conjugated synthetic peptide derived from human GnRHR: 201-300/328. < Cytoplasmic >		Subcellular Location: Secreted
Purification: affinity purified by Protein A		
Concentration: 1mg/ml		
Storage: 0.01M TBS (pH7.4) with 1% BSA, 0.02% Proclin300 and 50% Glycerol. Shipped at 4°C. Store at -20°C for one year. Avoid repeated freeze/thaw cycles.		
Background: Gonadotropin Releasing Hormone (GnRH) is down-regulated by hCG and believed to be an autocrine factor that regulates the ovary. The Gonadotropin Releasing Hormone Receptor (GnRHR) is synthesized in the pituitary gland. Activin A has been shown to stimulate the synthesis of GnRHR, illustrating a possible mechanism for the modulation of gonadotropin responsiveness to GnRH.		

— VALIDATION IMAGES —

Sample: Lane 1: Cerebrum (Mouse) Lysate at 40
ug Lane 2: A549 (Human) Cell Lysate at 30 ug
Primary: Anti-GnRHR (bs-23168R) at 1/1000
dilution Secondary: IRDye800CW Goat Anti-
Rabbit IgG at 1/20000 dilution Predicted band
size: 62-70 kD Observed band size: 63 kD