

---

## Cathepsin L (light chain) Rabbit pAb

Catalog Number: bs-23161R

Target Protein: Cathepsin L (light chain)

Concentration: 1mg/ml

Form: Liquid

Host: Rabbit

Clonality: Polyclonal

Isotype: IgG

Applications: WB (1:500-2000)

Reactivity: Mouse, Rat (predicted:Human)

Predicted MW: 5/37 kDa

Entrez Gene: 13039

Swiss Prot: P06797

Source: KLH conjugated synthetic peptide derived from mouse Cathepsin L (light chain):  
251-334/334.

Purification: affinity purified by Protein A

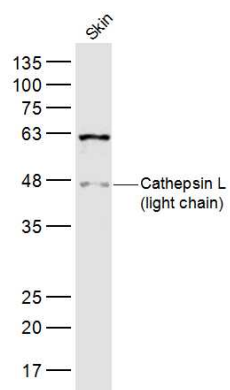
Storage: 0.01M TBS (pH7.4) with 1% BSA, 0.02% Proclin300 and 50% Glycerol.

Shipped at 4°C. Store at -20°C for one year. Avoid repeated freeze/thaw cycles.

**Background:** The protein encoded by this gene is a lysosomal cysteine proteinase that plays a major role in intracellular protein catabolism. Its substrates include collagen and elastin, as well as alpha-1 protease inhibitor, a major controlling element of neutrophil elastase activity. The encoded protein has been implicated in several pathologic processes, including myofibril necrosis in myopathies and in myocardial ischemia, and in the renal tubular response to proteinuria. This protein, which is a member of the peptidase C1 family, is a dimer composed of disulfide-linked heavy and light chains, both produced from a single protein precursor. At least two transcript variants encoding the same protein have been found for this gene.

### VALIDATION IMAGES

---



Sample: Skin (Rat) Lysate at 40 ug Primary: Anti- Cathepsin L (light chain) (bs-23161R) at 1/300 dilution  
Secondary: IRDye800CW Goat Anti-Rabbit IgG at 1/20000 dilution Predicted band size: 5/37 kD Observed  
band size: 47 kD