

**bs-12671R****[ Primary Antibody ]****TMPRSS11A Rabbit pAb****Bioss**  
**ANTIBODIES**

www.bioss.com.cn

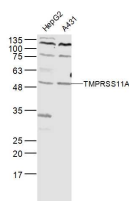
sales@bioss.com.cn

techsupport@bioss.com.cn

400-901-9800

**— DATASHEET —**

|  |                      |  |
|--|----------------------|--|
| <b>Host:</b> Rabbit  | <b>Isotype:</b> IgG  | <b>Applications:</b> WB (1:500-2000)       |
| <b>Clonality:</b> Polyclonal   |                      | <b>Reactivity:</b> Human                   |
| <b>GeneID:</b> 339967  | <b>SWISS:</b> Q6ZMR5 |  |
| <b>Target:</b> TMPRSS11A   |                      |  |
| <b>Immunogen:</b> KLH conjugated synthetic peptide derived from human TMPRSS11A: 21-120/421. < Extracellular >   |                      | <b>Predicted MW.:</b> 48 kDa               |
| <b>Purification:</b> affinity purified by Protein A  |                      | <b>Subcellular Location:</b> Cell membrane |
| <b>Concentration:</b> 1mg/ml   |                      |  |
| <b>Storage:</b> 0.01M TBS (pH7.4) with 1% BSA, 0.02% Proclin300 and 50% Glycerol.<br>Shipped at 4°C. Store at -20°C for one year. Avoid repeated freeze/thaw cycles. |                      |  |

**— VALIDATION IMAGES —**

Sample: HepG2(Human) Cell Lysate at 40 ug  
A431(Human) Cell Lysate at 40 ug Primary: Anti-TMPRSS11A (bs-12671R) at 1/300 dilution  
Secondary: IRDye800CW Goat Anti-Rabbit IgG at 1/20000 dilution Predicted band size: 48 kD  
Observed band size: 48 kD