

bs-12668R**[Primary Antibody]****Bioss**
ANTIBODIES

www.bioss.com.cn

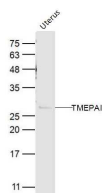
sales@bioss.com.cn

techsupport@bioss.com.cn

400-901-9800

TMEPAI Rabbit pAb**— DATASHEET —**

Host: Rabbit	Isotype: IgG	Applications: WB (1:500-2000)
Clonality: Polyclonal		Reactivity: Human, Mouse (predicted: Rat, Sheep, Chicken)
GeneID: 56937	SWISS: Q969W9	Predicted MW.: 32 kDa
Target: TMEPAI		Subcellular Location: Cell membrane
Immunogen: KLH conjugated synthetic peptide derived from human TMEPAI: 21-120/287. < Cytoplasmic >		
Purification: affinity purified by Protein A		
Concentration: 1mg/ml		
Storage: 0.01M TBS (pH7.4) with 1% BSA, 0.02% Proclin300 and 50% Glycerol. Shipped at 4°C. Store at -20°C for one year. Avoid repeated freeze/thaw cycles.		
Background: This gene encodes a transmembrane protein that contains a Smad interacting motif (SIM). Expression of this gene is induced by androgens and transforming growth factor beta, and the encoded protein suppresses the androgen receptor and transforming growth factor beta signaling pathways through interactions with Smad proteins. Overexpression of this gene may play a role in multiple types of cancer. Alternatively spliced transcript variants encoding multiple isoforms have been observed for this gene. [provided by RefSeq, Dec 2011]		

— VALIDATION IMAGES —

Sample: Uterus(Mouse) Lysate at 40 ug Primary:
Anti-TMEPAI (bs-12668R) at 1/300 dilution
Secondary: IRDye800CW Goat Anti-Rabbit IgG at
1/20000 dilution Predicted band size: 32 kD
Observed band size: 32 kD

— SELECTED CITATIONS —

- **[IF=4.8]** Qiao Zhou. et al. Jianpi Qingre Tongluo prescription alleviates the senescence-associated secretory phenotype with osteoarthritis by regulating STAG1/TP53/P21 signaling pathway. J ETHNOPHARMACOL. 2024 Oct;;118953 IHC,WB ;Rat. 39423944