

bsm-25325M**[Primary Antibody]****phospho-Tau (Thr231) Mouse mAb****BioSS**
ANTIBODIES

www.bioss.com.cn

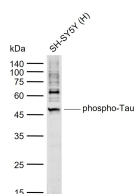
sales@bioss.com.cn

techsupport@bioss.com.cn

400-901-9800

— DATASHEET —

Host: Mouse	Isotype: IgG	Applications: WB (1:500-2000) Reactivity: Human Predicted MW.: 46/79 kDa Subcellular Location: Cell membrane ,Cytoplasm
Clonality: Monoclonal	CloneNo.: 7F12	
GeneID: 4137	SWISS: P10636	
Target: Tau (Thr231)		
Purification: affinity purified by Protein A		
Storage: Size : 50ul/100ul/200ul 0.01M PBS (pH7.4). Size : 200ug (PBS only) 0.01M PBS		
Background: Tau proteins are important Promotes microtubule assembly and stability, and might be involved in the establishment and maintenance of neuronal polarity. The C-terminus binds axonal microtubules while the N-terminus binds neural plasma membrane components, suggesting that tau functions as a linker protein between both. Axonal polarity is predetermined by tau localization (in the neuronal cell) in the domain of the cell body defined by the centrosome. The short isoforms allow plasticity of the cytoskeleton whereas the longer isoforms may preferentially play a role in its stabilization. Tau proteins subcellular located in the axons of neurons, in the cytosol and in association with plasma membrane components. It expressed in neurons. PNS-tau is expressed in the peripheral nervous system while the others are expressed in the central nervous system.		

— VALIDATION IMAGES —

Sample: Lane 1: Human SH-SY5Y cell lysates
Primary: Anti-phospho-Tau (Thr231)
(bsm-25325M) at 1/1000 dilution Secondary:
IRDye800CW Goat Anti-Mouse IgG at 1/20000
dilution Predicted band size: 46/79 kDa
Observed band size: 50 kDa