

bs-7899R

[Primary Antibody]

INCA1 Rabbit pAb

Bioss
ANTIBODIES

www.bioss.com.cn

sales@bioss.com.cn

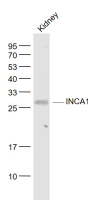
techsupport@bioss.com.cn

400-901-9800

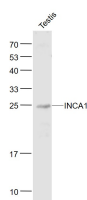
— DATASHEET —

Host: Rabbit	Isotype: IgG	Applications: WB (1:500-2000)
Clonality: Polyclonal		
GeneID: 388324		
Target: INCA1		
Immunogen: KLH conjugated synthetic peptide derived from human INCA1: 131-236/236.		
Purification: affinity purified by Protein A		
Concentration: 1mg/ml		
Storage: 0.01M TBS (pH7.4) with 1% BSA, 0.02% Proclin300 and 50% Glycerol. Shipped at 4°C. Store at -20°C for one year. Avoid repeated freeze/thaw cycles.		Reactivity: Mouse (predicted: Human, Rat, Pig, Sheep, Cow, Horse)
Background: Tissue specificity: Detected in testis, and at lower levels in ovary. Detected at very low levels in testis tumors.		Predicted MW.: 27 kDa
		Subcellular Location: Nucleus

— VALIDATION IMAGES —



Sample: Kidney (Mouse) Lysate at 40 ug Primary:
Anti- INCA1 (bs-7899R) at 1/1000 dilution
Secondary: IRDye800CW Goat Anti-Rabbit IgG at
1/20000 dilution Predicted band size: 27 kD
Observed band size: 27 kD



Sample: Testis (Mouse) Lysate at 40 ug Primary:
Anti- INCA1 (bs-7899R) at 1/1000 dilution
Secondary: IRDye800CW Goat Anti-Rabbit IgG at
1/20000 dilution Predicted band size: 27 kD
Observed band size: 25 kD