

bs-8096R**[Primary Antibody]****CCDC39 Rabbit pAb****BioSS**
ANTIBODIES

www.bioss.com.cn

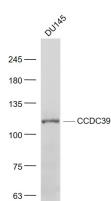
sales@bioss.com.cn

techsupport@bioss.com.cn

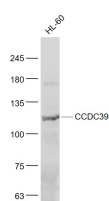
400-901-9800

— DATASHEET —

Host: Rabbit Clonality: Polyclonal GeneID: 339829 Target: CCDC39 Immunogen: KLH conjugated synthetic peptide derived from human CCDC39: 651-750/941. Purification: affinity purified by Protein A Concentration: 1mg/ml Storage: 0.01M TBS (pH7.4) with 1% BSA, 0.02% Proclin300 and 50% Glycerol. Shipped at 4°C. Store at -20°C for one year. Avoid repeated freeze/thaw cycles. Background: Required for assembly of dynein regulatory complex (DRC) and inner dynein arm complexes, which are responsible for ciliary beat regulation, thereby playing a central role in motility in cilia and flagella. Not required for outer dynein arm complexes assembly. Tissue specificity: Mainly expressed in nasal brushings and, to a lesser extent, in lungs and testis. Involvement in disease: Defects in CCDC39 are the cause of primary ciliary dyskinesia type 14 (CILD14). A disorder characterized by abnormalities of motile cilia. Respiratory infections leading to chronic inflammation and bronchiectasis are recurrent, due to defects in the respiratory cilia; reduced fertility is often observed in male patients due to abnormalities of sperm tails. Half of the patients exhibit randomization of left-right body asymmetry and situs inversus, due to dysfunction of monocilia at the embryonic node. Primary ciliary dyskinesia associated with situs inversus is referred to as Kartagener syndrome.	Isotype: IgG SWISS: Q9UFE4	Applications: WB (1:500-2000) Reactivity: Human (predicted: Mouse, Rat, Rabbit, Cow, Horse) Predicted MW.: 110 kDa Subcellular Location: Cytoplasm
---	---	---

— VALIDATION IMAGES —

Sample: DU145(Human) Cell Lysate at 30 ug
Primary: Anti- CCDC39 (bs-8096R) at 1/1000
Secondary: IRDye800CW Goat Anti-Rabbit IgG at 1/20000 dilution Predicted band size: 110 kD Observed band size: 110 kD



Sample: HL-60(Human) Cell Lysate at 30 ug
Primary: Anti- CCDC39 (bs-8096R) at 1/1000
Secondary: IRDye800CW Goat Anti-Rabbit IgG at 1/20000 dilution Predicted band size: 110 kD Observed band size: 110 kD