

bs-9022R**[Primary Antibody]****IQCG Rabbit pAb****BioSS**
ANTIBODIES

www.bioss.com.cn

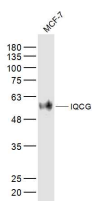
sales@bioss.com.cn

techsupport@bioss.com.cn

400-901-9800

— DATASHEET —

Host: Rabbit	Isotype: IgG	Applications: WB (1:500-2000)
Clonality: Polyclonal		Reactivity: Human (predicted: Mouse, Rat, Rabbit, Pig, Sheep, Cow, Dog, Horse)
GeneID: 84223	SWISS: Q9H095	Predicted MW.: 52 kDa
Target: IQCG		Subcellular Location: Cytoplasm
Immunogen: KLH conjugated synthetic peptide derived from human IQCG: 301-400/443.		
Purification: affinity purified by Protein A		
Concentration: 1mg/ml		
Storage: 0.01M TBS (pH7.4) with 1% BSA, 0.02% Proclin300 and 50% Glycerol. Shipped at 4°C. Store at -20°C for one year. Avoid repeated freeze/thaw cycles.		
Background: IQCG is a 443 amino acid protein containing one IQ domain. Widely distributed in nature, the IQ domain forms an amphiphilic seven-turn α -helix capable of binding calmodulin in a Ca^{2+} -independent manner. The level of intracellular calcium is tightly regulated in all eukaryotic cells. A modest increase in this level can result in a myriad of physiological responses, most of which are mediated by calmodulin (CaM), the universal calcium sensor. In acute T-lymphoid/myeloid leukemia, IQCG forms a complex with Nup98, an O-linked glycoprotein and a component of the nuclear pore complex. NUP98-IQCG complex bind co-activators and/or co-repressors, which suggest a role in transcriptional regulation. Nup98-IQCG complex inhibits 32Dcl3 cell apoptosis induced by Arabinofuranosylcytosine (Ara-C) and partially blocks granulocyte differentiation induced by G-CSF. IQCG exists as two isoforms due to alternatively splicing events.		

— VALIDATION IMAGES —

Sample: MCF-7(Human) Cell Lysate at 40 ug
Primary: Anti-IQCG (bs-9022R) at 1/300 dilution
Secondary: IRDye800CW Goat Anti-Rabbit IgG at 1/20000 dilution Predicted band size: 52 kD
Observed band size: 52 kD