

bsm-60470R**[Primary Antibody]****Bioss**
ANTIBODIES

www.bioss.com.cn

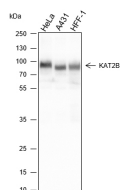
sales@bioss.com.cn

techsupport@bioss.com.cn

400-901-9800

KAT2B Recombinant Rabbit mAb**— DATASHEET —**

Host: Rabbit	Isotype: IgG/Kappa	Applications: WB (1:500-1000) Reactivity: Human Subcellular Location: Cytoplasm ,Nucleus
Clonality: Recombinant	CloneNo.: A5C3	
Target: KAT2B		
Purification: affinity purified by Protein A		
Concentration: 1mg/ml		
Storage: 0.01M TBS (pH7.4) with 1% BSA, 0.02% Proclin300 and 50% Glycerol. Shipped at 4°C. Store at -20°C for one year. Avoid repeated freeze/thaw cycles.		
Background: Functions as a histone acetyltransferase (HAT) to promote transcriptional activation. Has significant histone acetyltransferase activity with core histones (H3 and H4), and also with nucleosome core particles. Inhibits cell-cycle progression and counteracts the mitogenic activity of the adenoviral oncoprotein E1A. In case of HIV-1 infection, it is recruited by the viral protein Tat. Regulates Tat's transactivating activity and may help inducing chromatin remodeling of proviral genes.		

— VALIDATION IMAGES —

Blocking buffer: 5% NFDM/TBST Primary ab
dilution: 1:1000 Primary ab incubation
condition: 2 hours at room temperature
Secondary ab: Goat Anti-Rabbit IgG H&L (HRP)
Lysate: HeLa, A431, HFF-1 Protein loading
quantity: 20 µg Exposure time: 1 s Predicted MW:
93 kDa Observed MW: 93 kDa