

**bs-20788R****[ Primary Antibody ]****CCR4 Rabbit pAb****BioSS**  
**ANTIBODIES**

www.bioss.com.cn

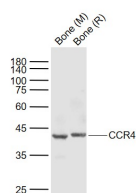
sales@bioss.com.cn

techsupport@bioss.com.cn

400-901-9800

**— DATASHEET —**

<b>Host:</b> Rabbit	<b>Isotype:</b> IgG	<b>Applications:</b> WB (1:500-2000)
<b>Clonality:</b> Polyclonal		<b>Reactivity:</b> Mouse, Rat
<b>GeneID:</b> 1233	<b>SWISS:</b> P51679	
<b>Target:</b> CCR4		
<b>Immunogen:</b> KLH conjugated synthetic peptide derived from human CCR4: 171-220/360. < Extracellular >		<b>Predicted MW.:</b> 40 kDa
<b>Purification:</b> affinity purified by Protein A		<b>Subcellular Location:</b> Cell membrane
<b>Concentration:</b> 1mg/ml		
<b>Storage:</b> 0.01M TBS (pH7.4) with 1% BSA, 0.02% Proclin300 and 50% Glycerol. Shipped at 4°C. Store at -20°C for one year. Avoid repeated freeze/thaw cycles.		
<b>Background:</b> The protein encoded by this gene belongs to the G-protein-coupled receptor family . It is a receptor for the CC chemokine - MIP-1, RANTES, TARC and MCP-1. Chemokines are a group of small polypeptide, structurally related molecules that regulate cell trafficking of various types of leukocytes. The chemokines also play fundamental roles in the development, homeostasis, and function of the immune system, and they have effects on cells of the central nervous system as well as on endothelial cells involved in angiogenesis or angiostasis. [provided by RefSeq, Jul 2008]		

**— VALIDATION IMAGES —**

Sample: Lane 1: Bone (Mouse) Lysate at 40 ug  
 Lane 2: Bone (Rat) Lysate at 40 ug Primary: Anti-CCR4 (bs-20788R) at 1/1000 dilution Secondary: IRDye800CW Goat Anti-Rabbit IgG at 1/20000 dilution Predicted band size: 42 kD Observed band size: 42 kD

**— SELECTED CITATIONS —**

- **[IF=6.1]** Qian-rong Wang. et al. CCL17 drives fibroblast activation in the progression of pulmonary fibrosis by enhancing the TGF- $\beta$ /Smad signaling. BIOCHEM PHARMACOL. 2023 Apr;210:115475 FCM,WB,IHC ;Mouse,Human. 36870575