

bs-20776R**[Primary Antibody]****BioSS**
ANTIBODIES

www.bioss.com.cn

sales@bioss.com.cn

techsupport@bioss.com.cn

400-901-9800

RASSF1A Rabbit pAb**— DATASHEET —**

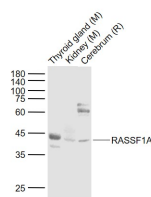
Host: Rabbit	Isotype: IgG
Clonality: Polyclonal	
GeneID: 11186	SWISS: Q9NS23
Target: RASSF1A	
Immunogen: KLH conjugated synthetic peptide derived from human RASSF1A: 251-344/344.	
Purification: affinity purified by Protein A	
Concentration: 1mg/ml	
Storage: 0.01M TBS (pH7.4) with 1% BSA, 0.02% Proclin300 and 50% Glycerol. Shipped at 4°C. Store at -20°C for one year. Avoid repeated freeze/thaw cycles.	
Background: The tumor suppressor gene RASSF1A (3p21.3), human Ras association domain family 1A, is expressed in heart, brain, placenta, lung, liver, skeletal muscle, kidney, pancreas, spleen, thymus, prostate, testis, small intestine, colon, and peripheral blood leukocytes. RASSF1A expression is inhibited by hypermethylation of the CpG island including the promoter and early transcribed regions of the human RASSF1A gene. Hypermethylated RASSF1A promoter is observed in primary tumors. Furthermore, RASSF1A is related with cell cycle regulation, apoptosis and microtubule stability. Potential tumor suppressor. Isoform A interacts with CDC20, an activator of the anaphase-promoting complex, APC, resulting in the inhibition of APC activity and mitotic progression. More specifically, RASSF1a inhibits proliferation by negatively regulating cell cycle progression at the level of G1/S-phase transition by regulating accumulation of cyclin D1 protein. It also inhibits the activation of STK3 and STK4 and may play an additional role as a scaffold protein, directing these enzymes to sites of activation. Isoform C has been shown not to perform these roles, and no function has been identified for this isoform.	

Applications: **WB** (1:500-2000)
IHC-P (1:100-500)
IHC-F (1:100-500)
IF (1:100-500)
Flow-Cyt (1µg/Test)
ICC/IF (1:100)

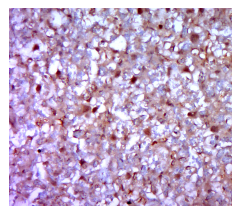
Reactivity: Human, Mouse, Rat
(predicted: Pig, Sheep,
Cow, Dog, Horse)

Predicted MW.: 39 kDa

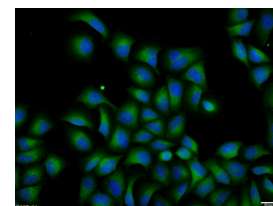
Subcellular Location: Cytoplasm ,Nucleus

— VALIDATION IMAGES —

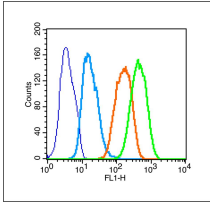
Sample: Lane 1: Thyroid gland (Mouse) Lysate at 40 µg
Lane 2: Kidney (Mouse) Lysate at 40 µg
Lane 3: Cerebrum (Rat) Lysate at 40 µg
Primary: Anti-RASSF1A (bs-20776R) at 1/1000 dilution
Secondary: IRDye800CW Goat Anti-Rabbit IgG at 1/20000 dilution
Predicted band size: 40 kD
Observed band size: 42 kD



Paraformaldehyde-fixed, paraffin embedded (mouse placenta tissue); Antigen retrieval by boiling in sodium citrate buffer (pH6.0) for 15min; Block endogenous peroxidase by 3% hydrogen peroxide for 20 minutes; Blocking buffer (normal goat serum) at 37°C for 30min; Antibody incubation with (RASSF1A) Polyclonal Antibody, Unconjugated (bs-20776R) at 1:400 overnight at 4°C, followed by a conjugated secondary (sp-0023) for 20 minutes and DAB staining.



Hela cell; 4% Paraformaldehyde-fixed; Triton X-100 at room temperature for 20 min; Blocking buffer (normal goat serum, C-0005) at 37°C for 20 min; Antibody incubation with (RASSF1A) polyclonal Antibody, Unconjugated (bs-20776R) 1:100, 90 minutes at 37°C; followed by a conjugated Goat Anti-Rabbit IgG antibody at 37°C for 90 minutes, DAPI (blue, C02-04002) was used to stain the cell nuclei.



Positive control: A549 cells (fixed with 70% ice-cold methanol overnight at 4°C, permeabilized with 0.1% PBS-Tween for 20 min at room temperature) Primary Antibody: Rabbit Anti-RASSF1A antibody(bs-20776R) green line; concentration: 1µg/Test Isotype Control Antibody: Rabbit IgG Secondary Antibody: F(ab')₂ fragment goat anti-rabbit IgG-FITC